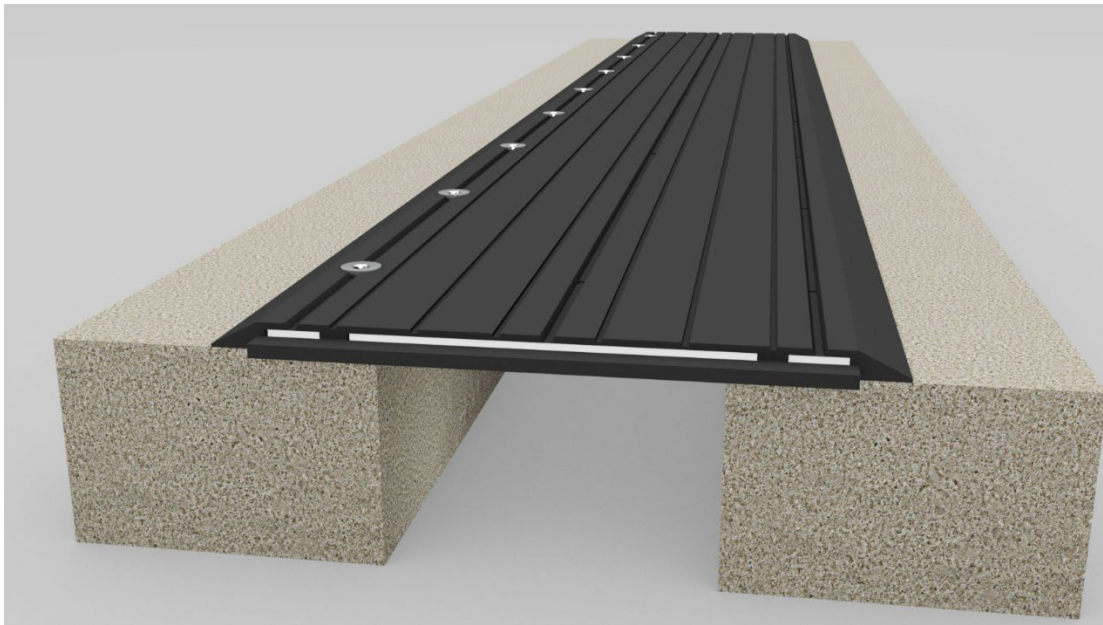




BUILDING TRUST



Installation Procedure



Wabo®SafetyFlex

The following installation procedure is very important and must be fully understood prior to beginning any work. To ensure proper installation and performance of expansion joint system the following actions must be completed by the installing contractor. Failure to do so will affect product warranty.

- 1) Carefully read and understand installation procedure. Contact Sika Emseal's Technical Service Department at 508-836-0280 for product assistance.
- 2) Inspect all shipments and materials for missing or damaged components and hardware. Contact Customer Service at 508-836-0280 with Emseal's order number and invoice for prompt assistance.
- 3) Inspect substrate or adjacent construction for acceptance before beginning work. Report unacceptable construction to the project manager for scheduled repair work.
- 4) Review Emseal shop drawings for project specific detailed information if Engineering services were purchased at time of order.

Information provided herein, including but not limited to, any drawing, design, photograph, graphic, or statement(s) ("Materials") are proprietary and the property of Sika Emseal. ("Company"). Reproduction, translation, or reduction to any electronic medium or machine readable form, in whole or part, is strictly prohibited, except for the express purpose for which it has been furnished, without prior written consent of Company. All Materials contained herein are provided by Company for information purposes only. Company reserves the right to amend or withdraw any information contained in the Materials without notice. All technical or other advice by Company, whether verbal or written, concerning products, or the use of products in specific situations ("Advice") is given by Company and is used at the User's own risk.

Health & Safety

During the installation of any Sika Emseal product, appropriate personal protective items should be worn at all times, including but not limited to the following:

- Proper work clothing
- Safety glasses
- Safety boots
- Gloves
- Hard hat



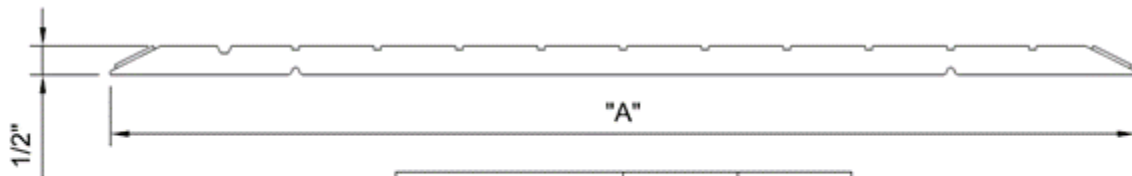
Local rules and regulations regarding safe work environments and health should be followed.

Product Components

The following components are required for the installation of this product:

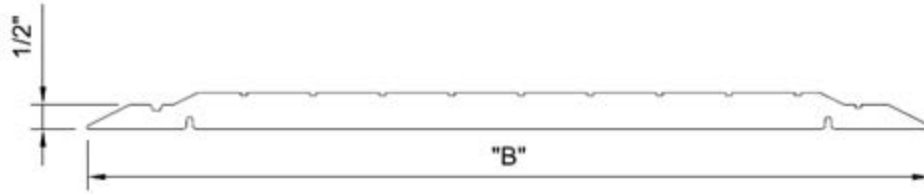
 1/4" x 3 7/8" Lg Hilti HSL-3 SK 8/20 H.D. Concrete Anchor (P/N #5717) <u>* California KIts Only *</u>	Or	 T-50 Torx $\frac{3}{8}$ " Drive Bit Socket <u>**BY OTHERS**</u> <u>(Not Included)</u>	 10mm x 70mm Lg. Hilti HUS3-C H.D. Concrete Screw (P/N #7801) <u>Standard Hardware</u>
		And	 10mm Drill Bit (P/N #7805) <u>Standard Hardware</u>

Components below vary in size depending on model of system:

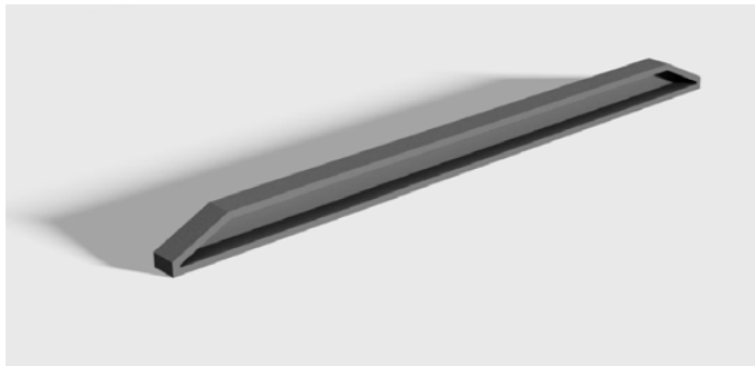


Model #	P/N	"A" dim.
SFP-600 - Black	19960	12"
SFP-1000 - Black	19954	18"





Model #	P/N	"B" dim.
SFP-1200 - Black	19980	17 1/2"
SFP-1800 - Black	19970	23 1/2"
SFP-2400 - Black	19990	29 3/4"
SFP-3100 - Black	19940	36 3/4"

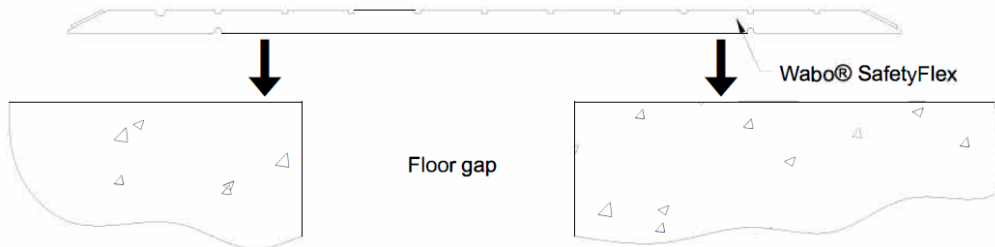


Model #	P/N
SFP-600 - Black	19962
SFP-1000 - Black	19957
SFP-1200 - Black	19982
SFP-1800 - Black	19972
SFP-2400 - Black	19992
SFP-3100 - Black	19942

SafetyFlex End Cap
(Refer to Chart for P/N)

Installation

- 1 Make sure the floor is level. High spots should be ground down and low spots filled in. If not able to level out joint opening, fasten Wabo®SafetyFlex along high side of the opening. If installing more than one piece, lay out entire run to ensure proper alignment. If a section of Wabo®SafetyFlex has been cut, apply a bead of sealant along the cut edge of Wabo®SafetyFlex to help prevent the steel insert from rusting.

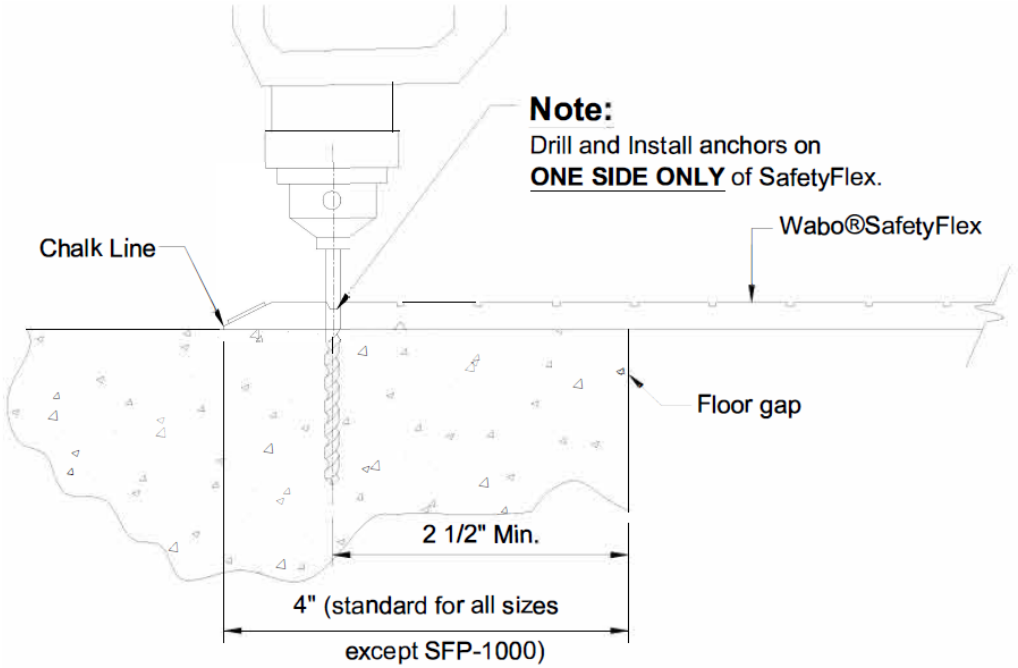


BUILDING TRUST

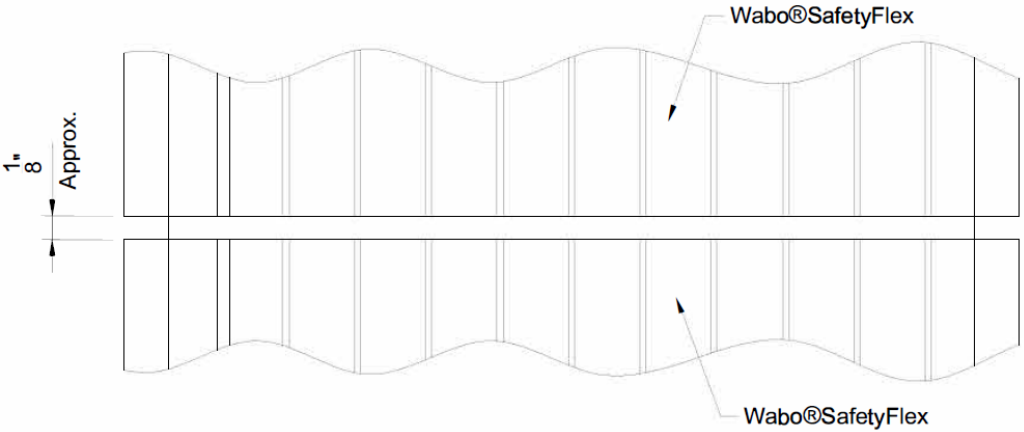


2 Drill end holes first. This ensures the expansion joint will not move and alignment with other joints is obtained. Follow anchor manufacturer's recommendations for drilling operation. Drill Ø10mm holes to proper depth and clean our holes.

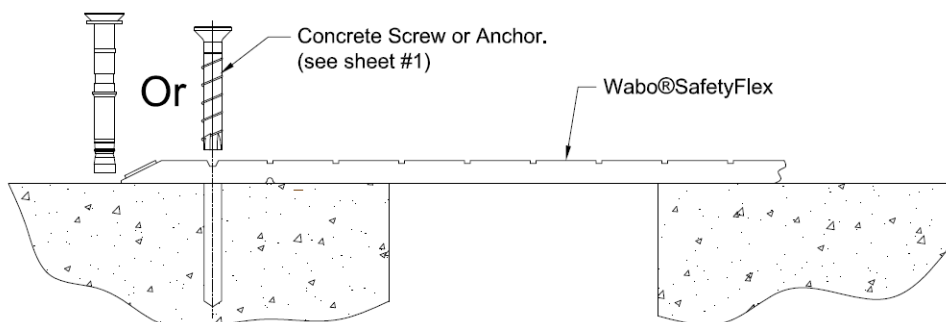
Notes: Refer to Hilti's website for manufacturer's recommendations for fastening



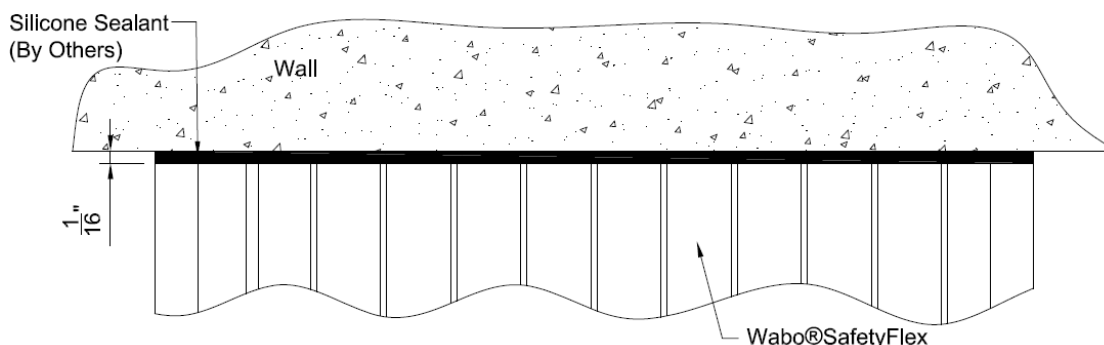
3 To allow for thermal expansion of the EPDM Rubber cover, leave a 1/8" approximate gap between Wabo@SafetyFlex sections.



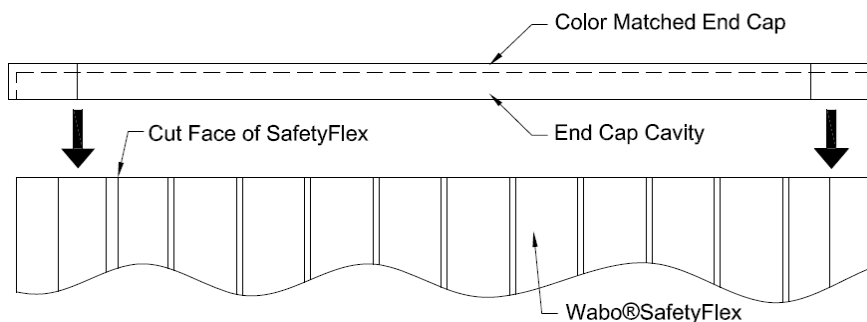
- 4** Follow anchor manufacturer's recommendations for proper anchor installation. Once anchors are in the end holes, drill remaining holes 16" O.C. and install anchors. Slight compression of EPDM cover will occur when threaded concrete anchor is tightened down.



- 5A** For a wall termination, use a Heavy Duty saw (Worm Gear type recommended) with cutting blade for Steel to cut Wabo@SafetyFlex. Leave about a 1/16" gap between Wabo@SafetyFlex and the wall. Fill in the 1/16" gap with a bead of silicone sealant (By Others).



- 5B** **For End Cap use (Optional)** – Apply a bead of clear silicone (By Others) in the End Cap cavity and squeeze the end cap onto the cut face of the Wabo@SafetyFlex.



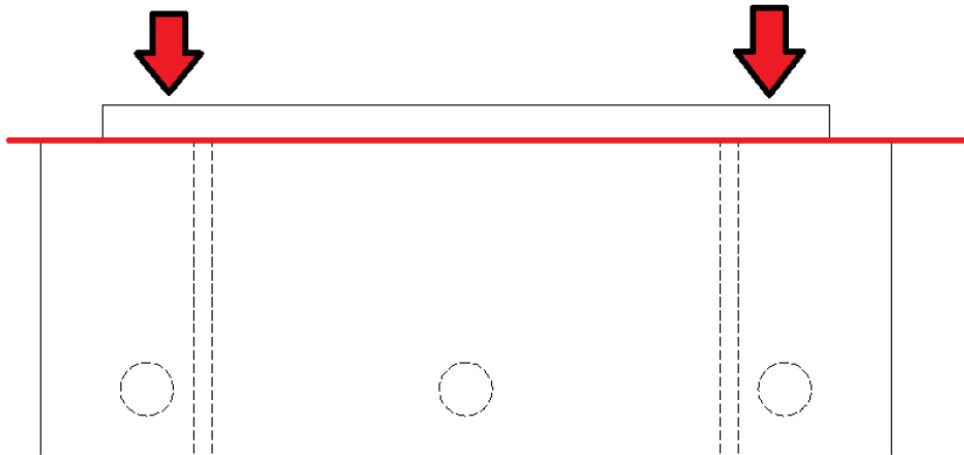
6

Finished Edges – Every Wabo®SafetyFlex coverplate comes with a “tongue” on one end and a “groove” on the other. The steps for having a “finished edge” (as shown below) are as follows.



7

Finished Edges – Using a sliding compound miter / tile saw, cut off the tongue end (area shown above red line) at required bevel angle. Lubricate if necessary. End result should be as shown in the photo in step 6, above.



Sika Emseal
25 Bridle Lane, Westborough, MA 01581 USA
Phone: 508-836-0280 / Fax 508-836-0281
www.emseal.com

Rev. 1.1 07-01-2024



BUILDING TRUST

