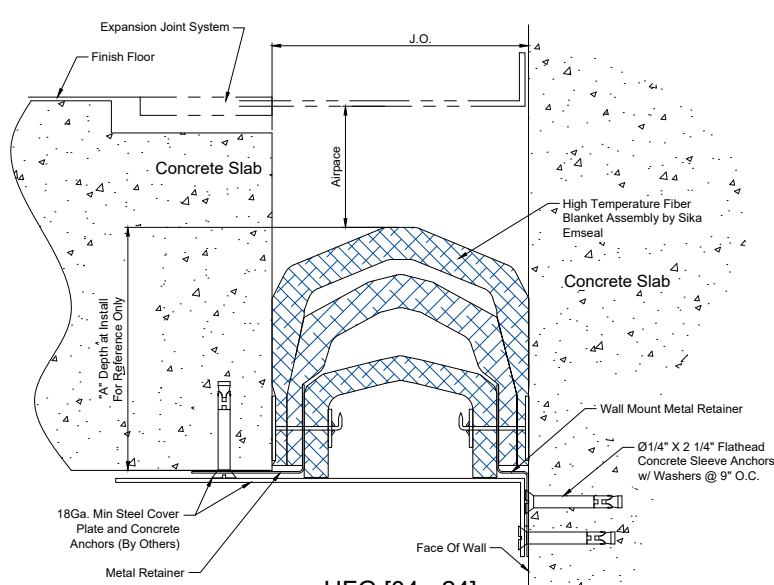
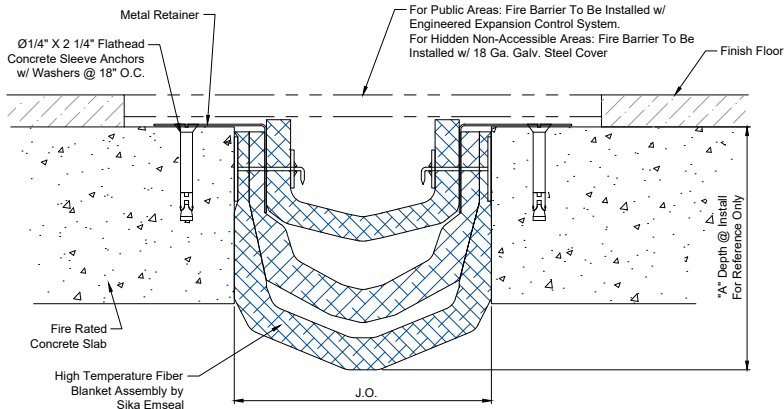


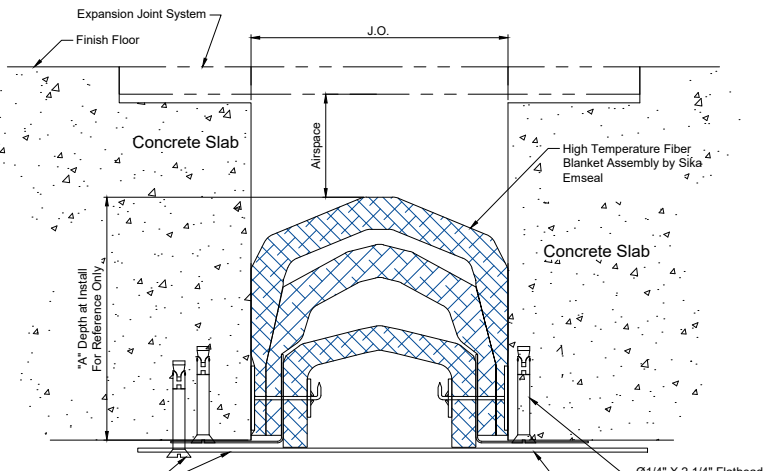
VFG [02 - 26]
WALL TO WALL CONDITIONS



UFG [04 - 24]
CEILING TO WALL CONDITIONS



HFG [4 - 26]
DECK TO DECK CONDITIONS



UFG [4 - 24]
CEILING TO CEILING CONDITIONS

DIMENSION CHART			
Model	J.O. @ Mid.	Depth @ Mid.	Fire Rating
HFG-401	4\" (102)	5\" (127)	1 HR
HFG-601	6\" (152)	8\" (203)	
HFG-801	8\" (203)	7 3/8\" (187)	
HFG-1001	10\" (254)	12\" (305)	
HFG-1201	12\" (305)	10 1/2\" (267)	
HFG-1402	4\" (102)	5\" (127)	
HFG-602	6\" (152)	6\" (152)	
HFG-802	8\" (203)	7 3/8\" (187)	
HFG-1002	10\" (254)	12\" (305)	
HFG-1202	12\" (305)	10 1/2\" (267)	
HFG-1402	14\" (356)	12\" (305)	4 HR
HFG-1602	16\" (406)	13 1/2\" (343)	
HFG-1802	18\" (457)	13\" (330)	
HFG-2002	20\" (508)	16 1/4\" (413)	
HFG-2202	22\" (559)	15 3/4\" (400)	
HFG-2402	24\" (610)	17 1/4\" (438)	
HFG-2602	26\" (660)	16 1/2\" (419)	
HFG-203	2\" (51)	8 1/2\" (216)	1 HR
HFG-304	3\" (76)	8 1/2\" (216)	
HFG-404	4\" (102)	8\" (203)	
HFG-504	5\" (127)	7 1/2\" (190)	
HFG-604	6\" (152)	7 1/4\" (184)	
HFG-801	8\" (203)	7 3/8\" (187)	
VFG-1001	10\" (254)	12\" (305)	2 HR
VFG-1201	12\" (305)	10 1/2\" (267)	
VFG-202	2\" (51)	9\" (229)	
VFG-402	4\" (102)	5\" (127)	
VFG-602	6\" (152)	6\" (152)	
VFG-802	8\" (203)	7 3/8\" (187)	
VFG-1002	10\" (254)	12\" (305)	3 HR
VFG-1202	12\" (305)	10 1/2\" (267)	
VFG-1402	14\" (356)	13\" (330)	
VFG-1602	16\" (406)	15\" (381)	
VFG-1802	18\" (457)	17\" (432)	
VFG-2002	20\" (508)	20\" (508)	
VFG-2202	22\" (559)	19\" (483)	
VFG-2402	24\" (610)	22\" (559)	
VFG-2602	26\" (660)	22\" (559)	
VFG-203	2\" (51)	9\" (229)	1 HR
VFG-303	3\" (76)	12\" (305)	
VFG-403	4\" (102)	18\" (457)	
VFG-503	5\" (127)	18\" (457)	
VFG-603	6\" (152)	18\" (457)	
UFG-401	4\" (102)	5\" (127)	
UFG-601	6\" (152)	6\" (152)	
UFG-801	8\" (203)	7 3/8\" (187)	
UFG-1001	10\" (254)	12\" (305)	
UFG-1201	12\" (305)	10 1/2\" (267)	
UFG-402	4\" (102)	5\" (127)	4 HR
UFG-602	6\" (152)	6\" (152)	
UFG-802	8\" (203)	7 3/8\" (187)	
UFG-1002	10\" (254)	12\" (305)	
UFG-1202	12\" (305)	10 1/2\" (267)	
UFG-204	2\" (51)	8 1/2\" (216)	

() - Denotes Millimeters

*Available Retainer Types
Shown on Next Page



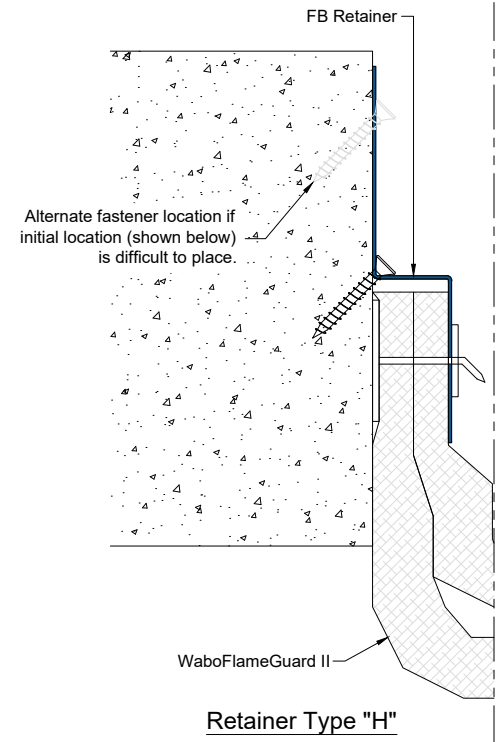
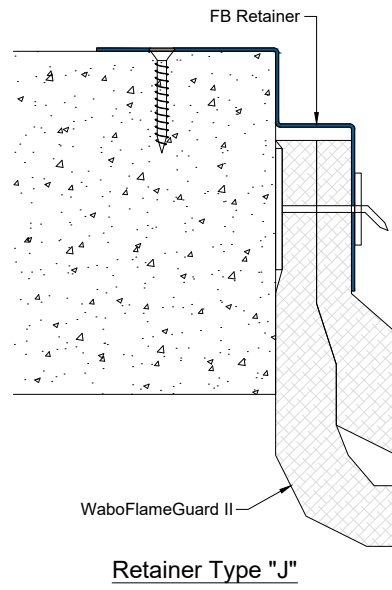
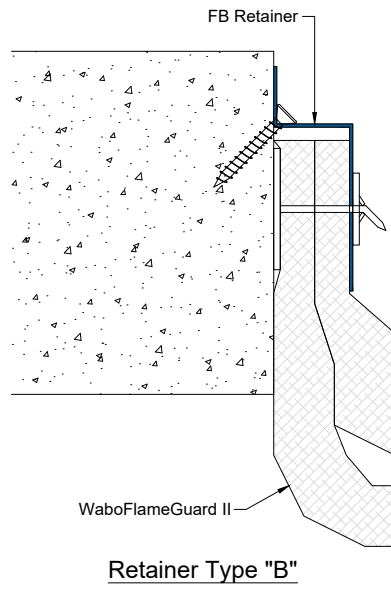
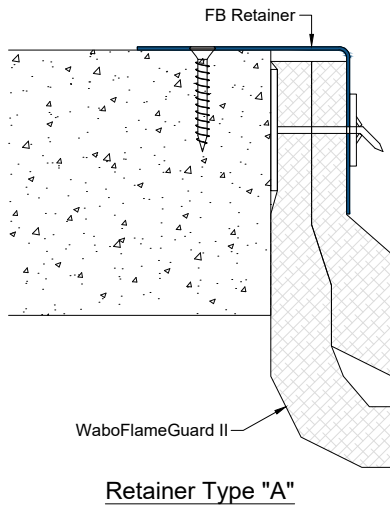
COMMERCIAL EXPANSION JOINTS
Emseal • Wabo

Revisions	
Initial	
05/01/24	AGD

FlameGuard II - Fire Rated Conditions

DOCUMENT NUMBER: FG_02-24_FlameGuardII	DRAWN BY: AGD	DATE: 05/01/24	SCALE: NTS	SHEET: 1 of 2
---	------------------	-------------------	---------------	------------------

AS A MANUFACTURER OF CONSTRUCTION PRODUCTS, SIKA CORPORATION PROVIDES GENERIC DETAILS AS A GENERAL GUIDE FOR INFORMATION PURPOSES ONLY. THESE DETAILS ARE NOT INTENDED TO REPLACE SOUND ENGINEERING AND ARCHITECTURAL PRACTICES AND SHOULD NOT BE RELIED UPON FOR THAT PURPOSE. SIKA CORPORATION ASSUMES NO LIABILITY WITH RESPECT TO THE DESIGN OF THE SYSTEM, THE ARCHITECT, CONSULTANT AND/OR ENGINEER OR DESIGN PROFESSIONAL FOR A PARTICULAR PROJECT BEARS THE SOLE RESPONSIBILITY FOR THE DESIGN OF THE SYSTEM, FOR THE PREPARATION AND APPROVAL OF THE PROJECT SPECIFICATIONS, DETAILS AND SHOP DRAWINGS, AND FOR DETERMINING THEIR SUITABILITY FOR A PARTICULAR PROJECT OR APPLICATION. SIKA CORPORATION MAKES NO WARRANTY OF ANY KIND, EITHER EXPRESS OR IMPLIED, AS TO THE CONTENT OF THIS GUIDE DETAIL. SIKA SHALL NOT BE RESPONSIBLE UNDER ANY LEGAL THEORY TO ANY THIRD PARTY FOR ANY DIRECT OR CONSEQUENTIAL DAMAGES OF ANY KIND ARISING FROM THE USE OF THIS GUIDE DETAIL. THIS DRAWING IS PROTECTED BY COPYRIGHT, THE RIGHT TO REPRODUCE IN ANY FORM BEING THE EXCLUSIVE RIGHT OF SIKA CORPORATION. ANY UNAUTHORIZED REPRODUCTION WILL BE PROSECUTED.



COMMERCIAL
EXPANSION JOINTS
Emseal[®] ■ Wabo[®]

Revisions	
△	initial
△	05/01/24 AGD
△	
△	
△	
△	
△	

FlameGuard II - Fire Rated Conditions

DOCUMENT NUMBER: FG_02-24_FlameGuardII	DRAWN BY: AGD	DATE: 05/01/24	SCALE: NTS	SHEET: 2 of 2
---	------------------	-------------------	---------------	------------------

AS A MANUFACTURER OF CONSTRUCTION PRODUCTS, SIKA CORPORATION PROVIDES GENERIC DETAILS AS A GENERAL GUIDE FOR INFORMATION PURPOSES ONLY. THESE DETAILS ARE NOT INTENDED TO REPLACE SOUND ENGINEERING AND ARCHITECTURAL PRACTICES AND SHOULD NOT BE RELIED UPON FOR THAT PURPOSE. SIKA CORPORATION ASSUMES NO LIABILITY WITH RESPECT TO THE DESIGN OF THE SYSTEM, THE ARCHITECT, CONSULTANT AND/OR ENGINEER OR DESIGN PROFESSIONAL FOR A PARTICULAR PROJECT BEARS THE SOLE RESPONSIBILITY FOR THE DESIGN OF THE SYSTEM, FOR THE PREPARATION AND APPROVAL OF THE PROJECT SPECIFICATIONS, DETAILS AND SHOP DRAWINGS, AND FOR DETERMINING THEIR SUITABILITY FOR A PARTICULAR PROJECT OR APPLICATION. SIKA CORPORATION MAKES NO WARRANTY OF ANY KIND, EITHER EXPRESS OR IMPLIED, AS TO THE CONTENT OF THIS GUIDE DETAIL. SIKA SHALL NOT BE RESPONSIBLE UNDER ANY LEGAL THEORY TO ANY THIRD PARTY FOR ANY DIRECT OR CONSEQUENTIAL DAMAGES OF ANY KIND ARISING FROM THE USE OF THIS GUIDE DETAIL. THIS DRAWING IS PROTECTED BY COPYRIGHT, THE RIGHT TO REPRODUCE IN ANY FORM BEING THE EXCLUSIVE RIGHT OF SIKA CORPORATION. ANY UNAUTHORIZED REPRODUCTION WILL BE PROSECUTED.