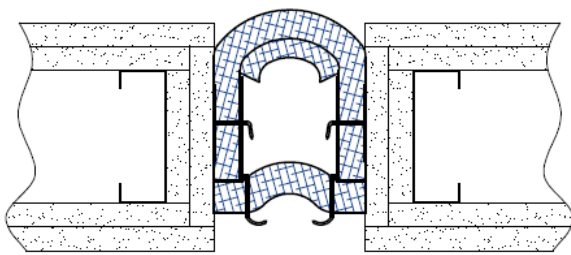




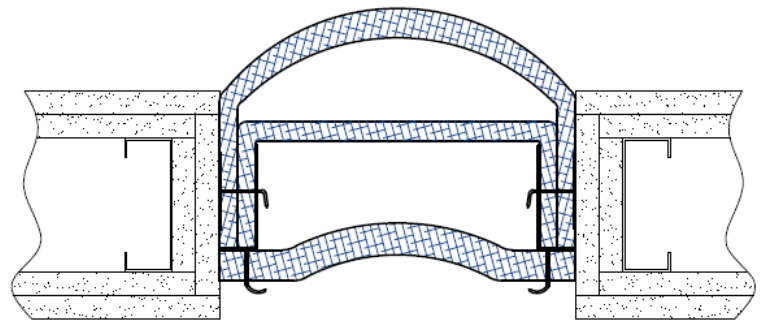
BUILDING TRUST



Installation Procedure



4" & 6" Joint
Openings



8"-26" Joint Openings

Wabo[®]FlameGuard II – VFG 4”-26”

Vertical Fire Barrier Systems for Expansion Joints

The following installation procedure is very important and must be fully understood prior to beginning any work. To ensure proper installation and performance of expansion joint system the following actions must be completed by the installing contractor. **Failure to do so will affect product warranty.**

- 1) Carefully read and understand installation procedure. Contact Emseal's Technical Service Department at (508) 836-0280 for product assistance.
- 2) Inspect all shipments and materials for missing or damaged components and hardware. Contact Customer Service at (508) 836-0280 with Emseal's order number and invoice for prompt assistance.
- 3) Inspect substrate or adjacent construction for acceptance before beginning work. Report unacceptable construction to the project manager for scheduled repair work.
- 4) Review Emseal shop drawings for project specific detailed information if Engineering services were purchased at time of order.

Health & Safety

During the installation of any Sika Emseal product, appropriate personal protective items should be worn at all times, including but not limited to the following:

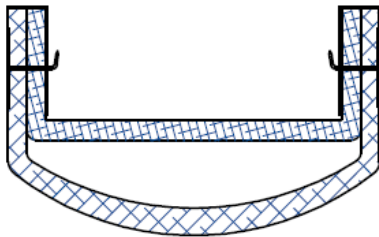
- Proper work clothing
- Safety glasses
- Safety boots
- Gloves
- Hard hat



Local rules and regulations regarding safe work environments and health should be followed.

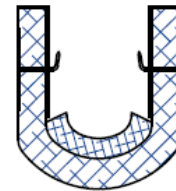
Product Components

The following components are required for the installation of this product:



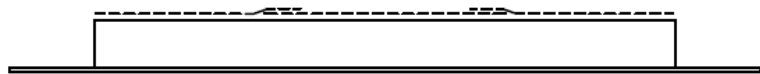
Flameguard II 8" thru 12" 1 hr Rating Wall Assembly
(For size and p/n refer to chart)
Corner Conditions Utilize Same Components

Model #	Part # 1 hr
VFG-1201	VFG1201
VFG-1001	VFG1001
VFG-801	VFG801



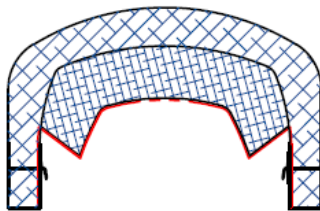
Flameguard II 4" thru 6" Wall Assembly
(For size and p/n refer to chart)
Corner Conditions Utilize Same Components

Model #	Part # 2 hr
VFG-602	VFG602
VFG-402	VFG402



Splice Transition
(For size and p/n refer to chart)

Model #	Part #	Model #	Part #	Model #	Part #
VFG-1201	3232	VFG-1602	3241	VFG-2602	3247
VFG-1001	3230	VFG-1402	3239	VFG-2402	3245
VFG-801	3228	VFG-1202	3238	VFG-2202	3244
VFG-602	3226	VFG-1002	3237	VFG-2002	3243
VFG-402	3224	VFG-802	3236	VFG-1802	3242



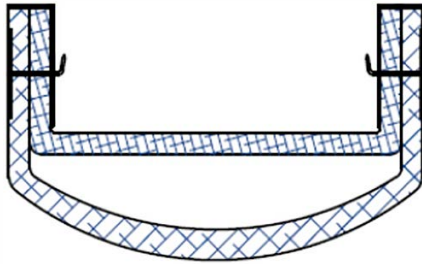
Flameguard II 8" 2 hr Rating Wall Assembly
(For size and p/n refer to chart)
Corner Conditions Utilize Same Components

Model #	Part # 2 hr
VFG-802	VFG802

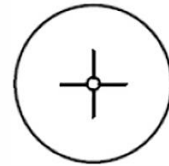


BUILDING TRUST





Flameguard II 10" thru 26" 2 hr Rating Wall Assembly
 (For size and p/n refer to chart)
 Corner Conditions Utilize Same Components



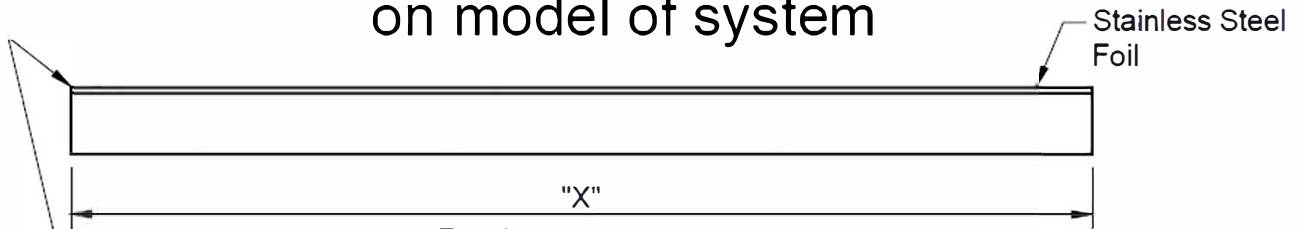
1 3/16" Dia Speed Washer
 Part Number -

Model #	Part # 2 hr
VFG-2602	VFG2602
VFG-2402	VFG2402
VFG-2202	VFG2202
VFG-2002	VFG2002
VFG-1802	VFG1802
VFG-1602	VFG1602
VFG-1402	VFG1402
VFG-1202	VFG1202
VFG-1002	VFG1002



Hilti CFS-S SIL GG Sealant
 Part Number - #2861

Components shown below vary in size depending on model of system



Caution: Sharp Edges. use gloves when handling.

(For size refer to chart)

Model #	"X"
VFG-1201	18"
VFG-1001	15"
VFG-801	12"
VFG-602	9"
VFG-402	6"

Model #	"X"
VFG-1602	27"
VFG-1402	24"
VFG-1202	21"
VFG-1002	18"
VFG-802	15"

Model #	"X"
VFG-2602	42"
VFG-2402	39"
VFG-2202	36"
VFG-2002	33"
VFG-1802	30"

Layer "A" Fire Blanket



BUILDING TRUST

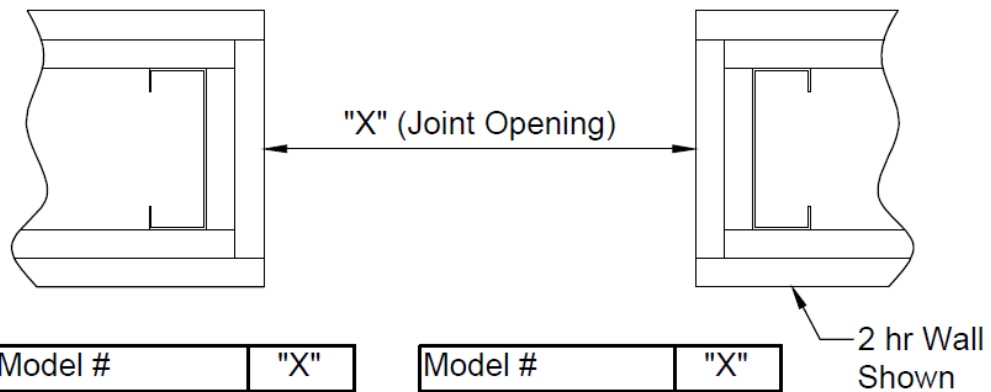


Installation

- 1 Prior to installation, utilize a round tube or 2x4 to place a crease in the fire barrier section. Exercise care not to damage or puncture fire barrier section. This step will help with folding and installing fire barrier into joint opening.



- 2 Prior to beginning work, installer shall inspect for proper wall construction. Verify joint opening is as called for on chart.



Model #	"X"
VFG-1402	14"
VFG-1201/1202	12"
VFG-1001/1002	10"
VFG-801/802	8"
VFG-602	6"
VFG-402	4"

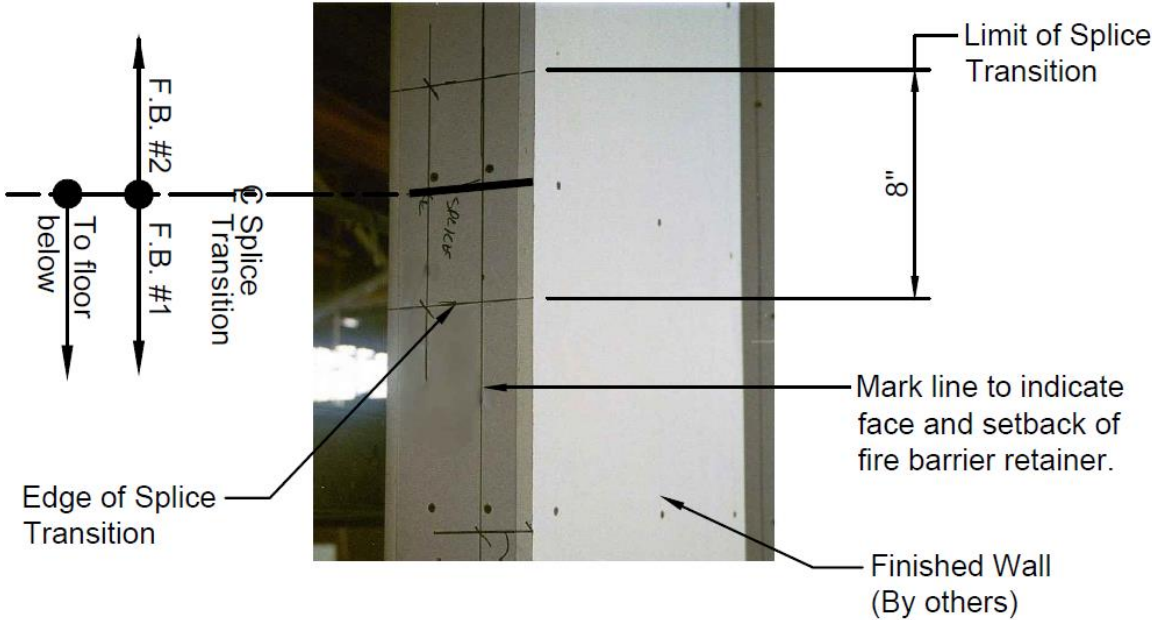
Model #	"X"
VFG-2602	26"
VFG-2402	24"
VFG-2202	22"
VFG-2002	20"
VFG-1802	18"
VFG-1602	16"

3

Mark fire barrier splice locations and outline edges of splice transition as shown.

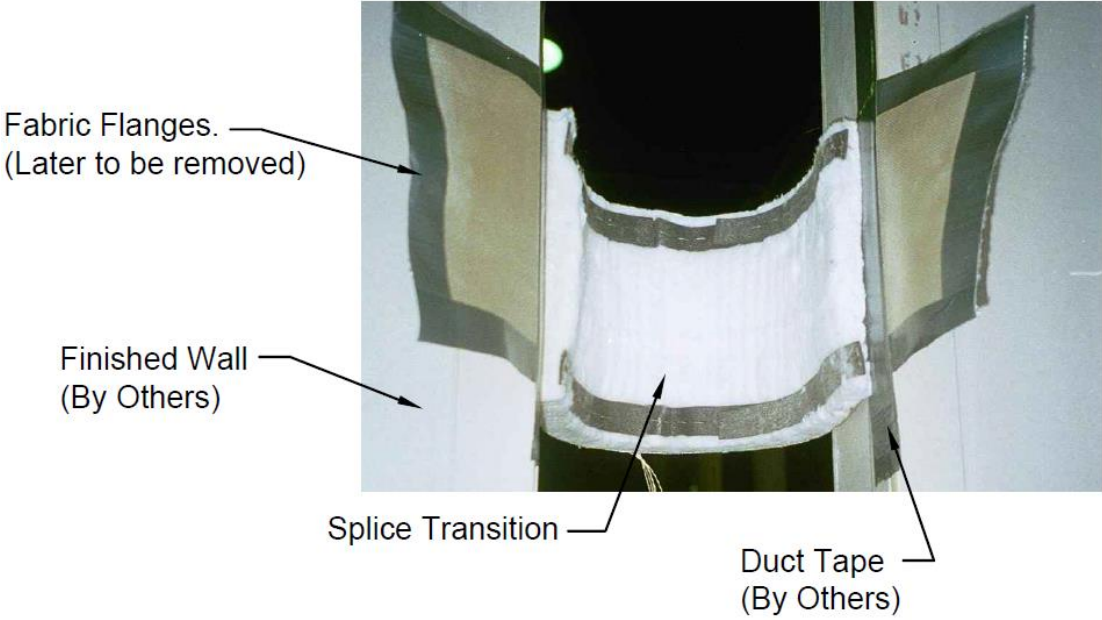
Note:

Refer to Emseal shop drawings to determine setback of Splice transition.



4

After splice locations have been determined, secure splice transition, utilizing duct tape to finished wall as shown in photo. Locate duct tape to secure & support splice transition from sagging downward. Duct tape along vertical edge of blanket is the best location.

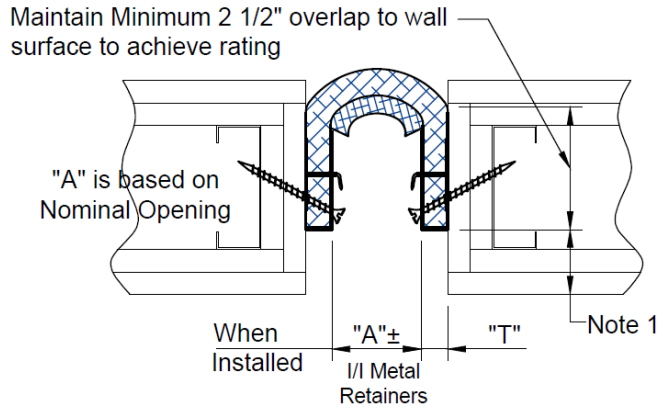
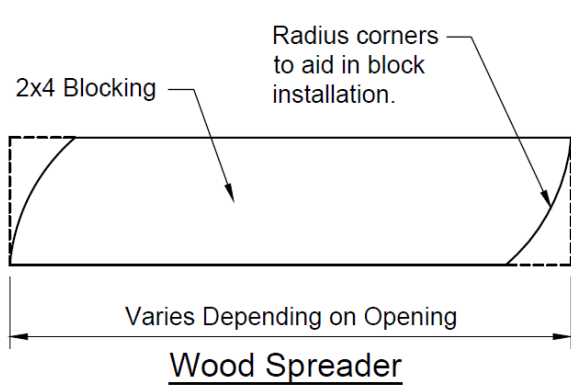
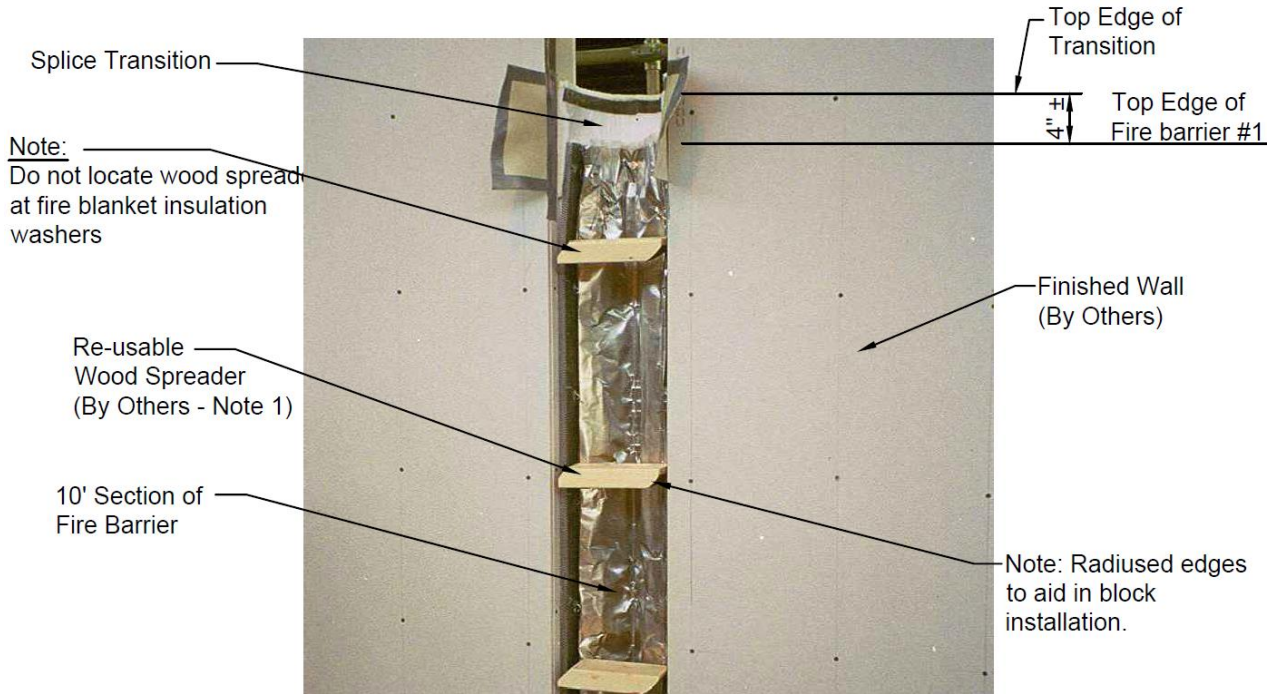


5

Insert 10' section of fire barrier into opening. Ensure that end of fire barrier is located on centerline of splice transition. Once fire barrier is inserted into opening, install and wedge wood spreaders to expand fire barrier to its correct position.

Notes:

1. Wood spreaders are required to ensure that fire barrier is installed tight to adjacent wall construction. Emseal recommends four wood spreaders per 10 ft. length of fire barrier.



Note:

1. Set back determined by proposed expansion joint cover and its overall depth, refer to WBA shop drawings. Fire Barrier must clear expansion joint cover.

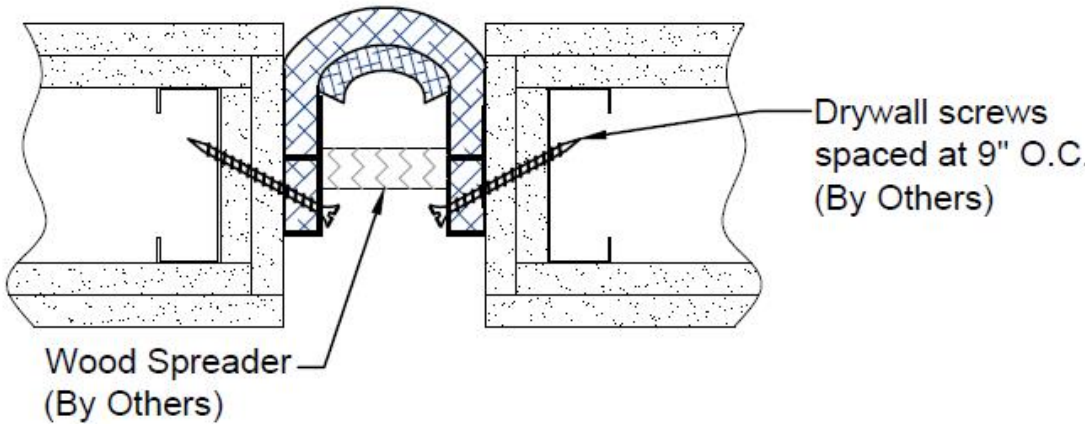
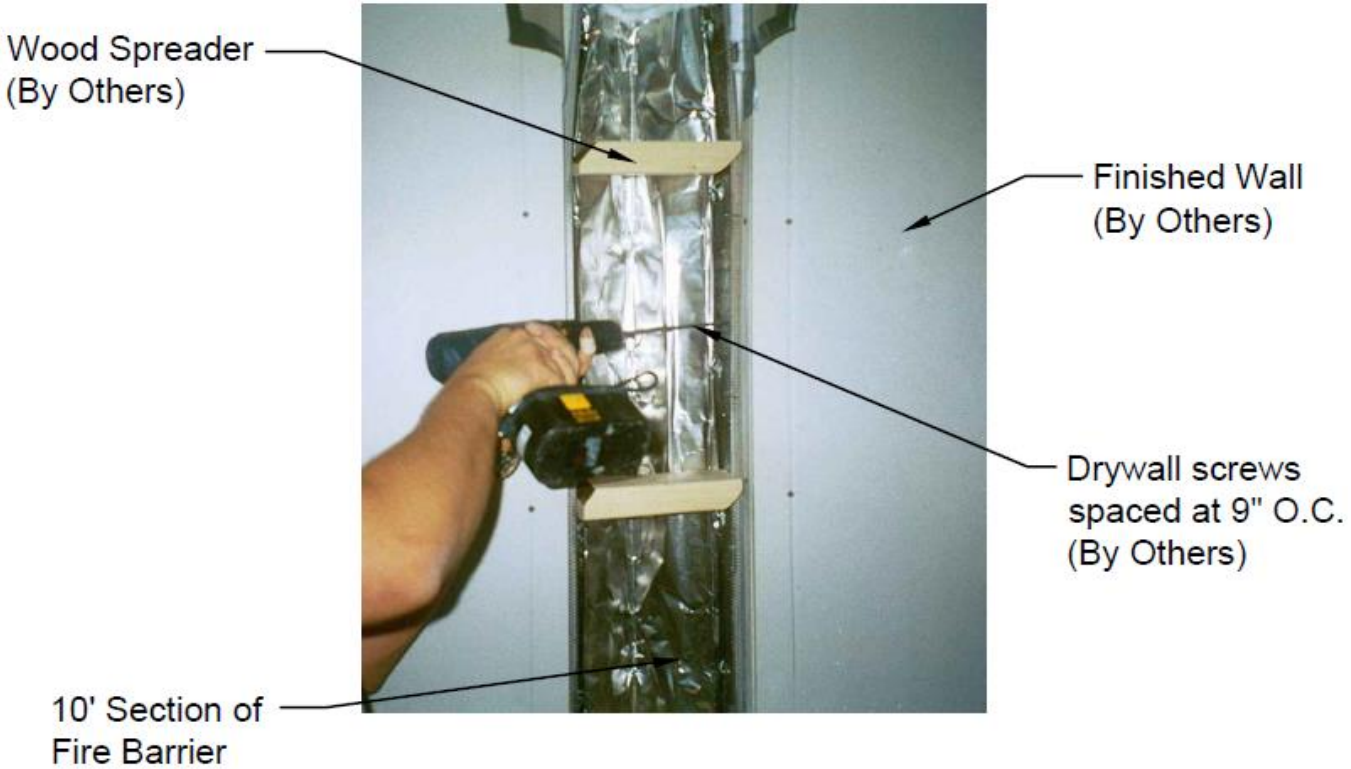
Model	"A"	"T"	Model	"A"	"T"
VFG-1402	10"	2"	VFG-2602	22"	2"
VFG-1201/1202	9 1/2"	1 1/4"	VFG-2402	20"	2"
VFG-1001/1002	7 1/2"	1 1/4"	VFG-2202	18"	2"
VFG-801/802	5 1/2"	1 1/4"	VFG-2002	16"	2"
VFG-602	5"	1/2"	VFG-1802	14"	2"
VFG-402	3"	1/2"	VFG-1602	12"	2"



6

Once fire barrier has been blocked open, mark locations for drywall screws spaced at 9" O.C. Once locations have been marked, install drywall screws.

Note: Drywall screws supplied by others. On larger systems, 4" long coarse thread drywall screws will be required to achieve proper stud engagement.



7

After the first section of fire barrier has been installed, apply CFS-S SIL GG (#2861) sealant to all blanket layers of the fire blanket assembly (Except: splice transition).

CFS-S SIL GG
(#2861) Fire Sealant
applied to each
individual layer.



Splice Transition

8

Repeat Step 5 with next section of fire barrier. Install next section, ensuring that there are no gaps at the splice location between blankets, as shown below.

Note:

1. To remove small gaps between sections of fire barrier, gently tap opposite ends of metal retainers toward splice line with a hammer and wood blocking, compressing the CFS-S SIL GG (#2861) sealant at the splice line. Exercise care not to damage fire barrier blanket where wood blocking is applied.
2. Once fire barrier sections have been installed, utilize a sharp knife to remove flaps of splice transition section. Exercise care not to damage fire barrier sections or adjacent wall surface.

Splice Transition
Flaps (Note 2)

Splice Line
(No Gaps)



9

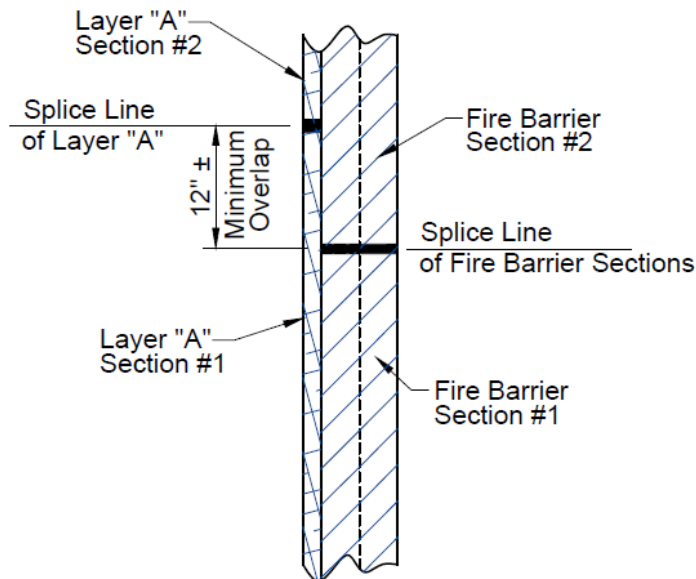
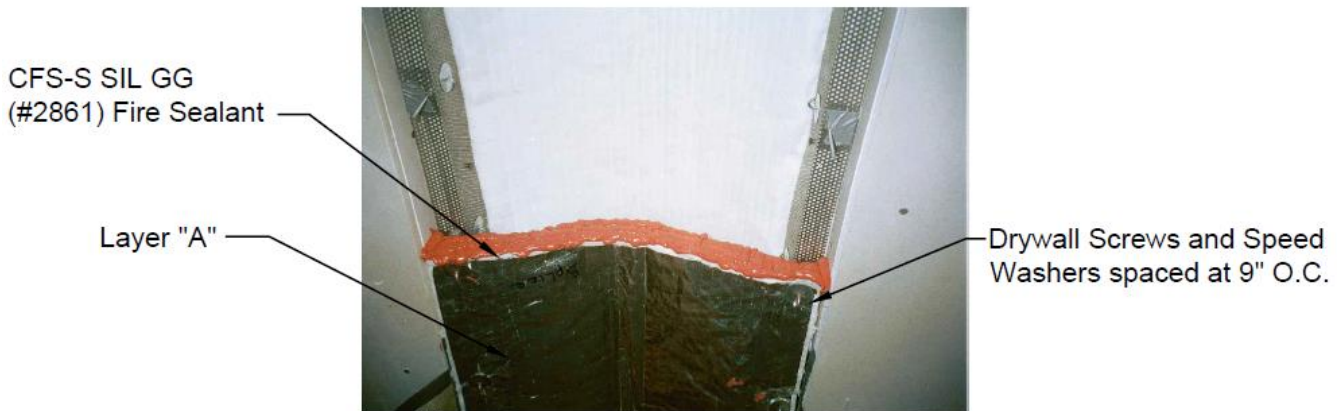
Once all vertical sections have been installed, proceed with installation of layer "A".

Notes:

1. When installing layer "A", align edge of blanket flush with inside opening of wall (as shown). Once blanket is flush with the wall opening, fasten layer "A" on to metal retainers using the drywall screws and speed washers (supplied), spaced at 9" OC. Do not compress blanket when installing speed washers. After one side has been fastened, repeat procedure for other side.
2. At splice lines for layer "A", apply a layer of CFS-S SIL GG (#2861) sealant at the splice location as shown.

Installation Notes:

1. Utilizing a marker, mark locations on wall face where the drywall screws and speed washers will fasten layer "A" to metal retainers.

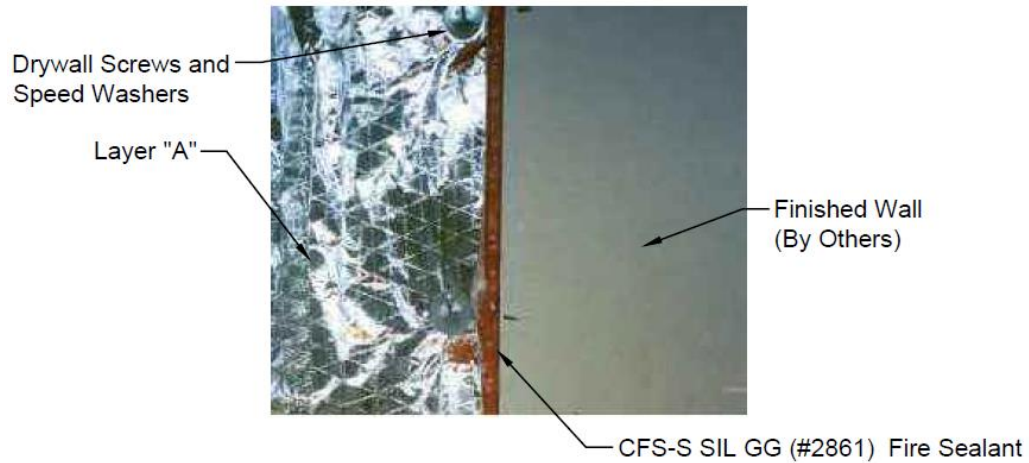


Splice Line Recommendations



10

After layer "A" has been installed, apply a bead of CFS-S SIL GG (#2861) sealant along edges of layer "A" and wall opening as shown. This is to ensure that there is no gapping between the fire barrier and wall opening.

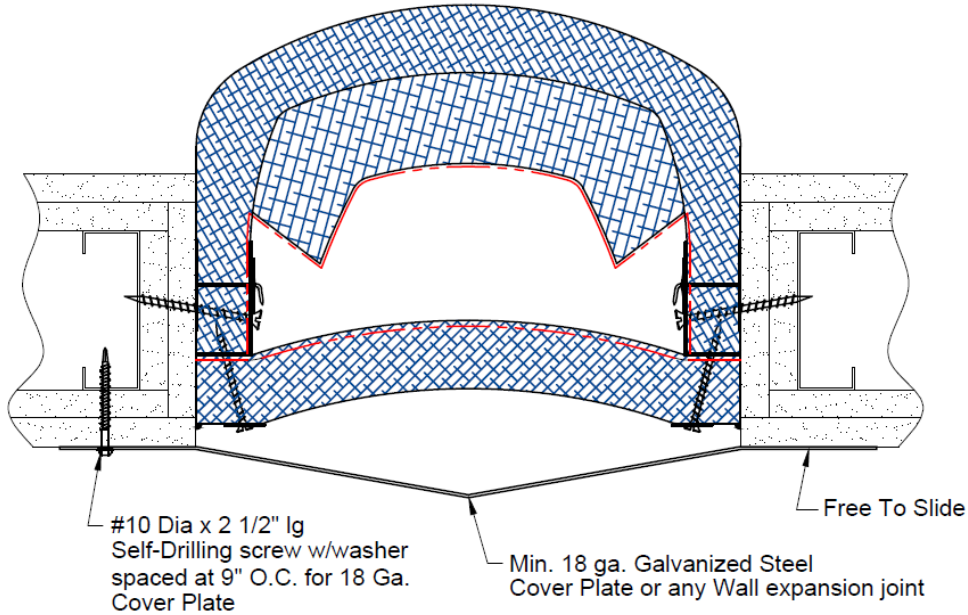


11

Fire barrier installation for corner condition is typical to procedure shown above. Actual Fire Barrier system and components remain unchanged.

12

Once all fire barrier blanket layers have been installed, a Min 18 Ga. Steel Coverplate or any wall expansion joint shall be installed over the fire barrier. When using a cover plate or wall expansion joint, the cover plate system shall meet the movement criteria of the fire barrier. This is to ensure that the fire barrier will always be covered and protected.



Information provided herein, including but not limited to, any drawing, design, photograph, graphic, or statement(s) ("Materials") are proprietary and the property of Sika Emseal. ("Company"). Reproduction, translation, or reduction to any electronic medium or machine readable form, in whole or part, is strictly prohibited, except for the express purpose for which it has been furnished, without prior written consent of Company. All Materials contained herein are provided by Company for information purposes only. Company reserves the right to amend or withdraw any information contained in the Materials without notice. All technical or other advice by Company, whether verbal or written, concerning products, or the use of products in specific situations ("Advice") is given by Company and is used at the User's own risk.

Sika Emseal
25 Bridle Lane, Westborough, MA 01581 USA
Phone: 508-836-0280 / Fax 508-836-0281
www.emseal.com

Rev. 1.0 06-14-2024



BUILDING TRUST

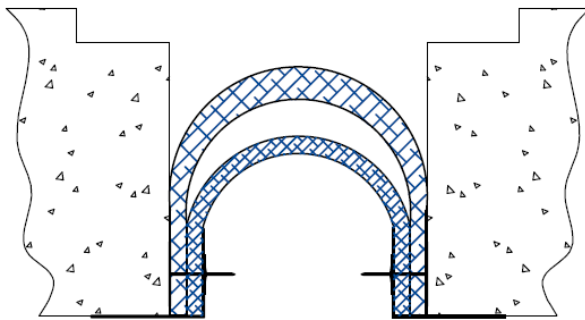




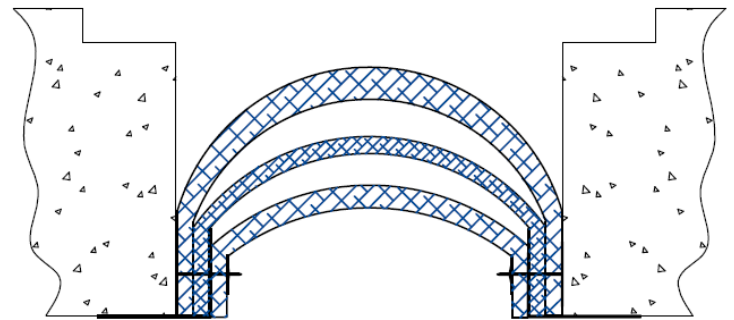
BUILDING TRUST



Installation Procedure



2 Layers
4" thru 6"



3 Layers
8" thru 12"

Wabo[®]FlameGuard II – UFG & UFG-C 4"-12"

Fire Barrier Systems for Expansion Joints

The following installation procedure is very important and must be fully understood prior to beginning any work. To ensure proper installation and performance of expansion joint system the following actions must be completed by the installing contractor. **Failure to do so will affect product warranty.**

- 1) Carefully read and understand installation procedure. Contact Emseal's Technical Service Department at (508) 836-0280 for product assistance.
- 2) Inspect all shipments and materials for missing or damaged components and hardware. Contact Customer Service at (508) 836-0280 with Emseal's order number and invoice for prompt assistance.
- 3) Inspect substrate or adjacent construction for acceptance before beginning work. Report unacceptable construction to the project manager for scheduled repair work.
- 4) Review Emseal shop drawings for project specific detailed information if Engineering services were purchased at time of order.

Health & Safety

During the installation of any Sika Emseal product, appropriate personal protective items should be worn at all times, including but not limited to the following:

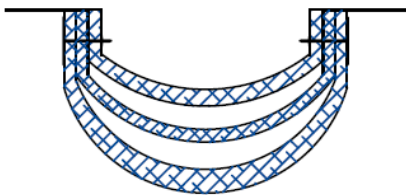
- Proper work clothing
- Safety glasses
- Safety boots
- Gloves
- Hard hat



Local rules and regulations regarding safe work environments and health should be followed.

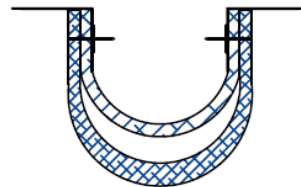
Product Components

The following are standard components for the floor condition:



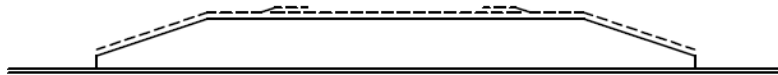
Flameguard II 8" thru 12" Floor Assembly
(For size and p/n refer to chart)

Model #	Part # 1 hr	Part # 2 hr
UFG-1201,1202	UFG1201	UFG1202
UFG-1001,1002	UFG1001	UFG1002
UFG-801,802	UFG801	UFG802



Flameguard II 4" thru 6" Floor Assembly
(For size and p/n refer to chart)

Model #	Part # 1 hr	Part # 2 hr
UFG-601,602	UFG601	UFG602
UFG-401,402	UFG401	UFG402



Splice Transition
(For size and p/n refer to chart)

Model #	Part #
UFG-1201,1201C,1202,1202C	3211
UFG-1001,1001C,1002,1002C	3211
UFG-801,801C,802,802C	3208
UFG-601,601C,602,602C	3206
UFG-401,401C,402,402C	3204



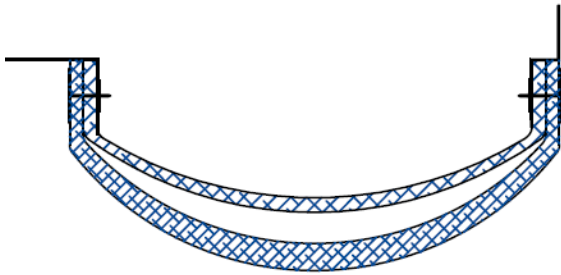
1/4" X 2-1/4" Concrete
Sleeve Anchor
Part Number - #6913



1/4" Flat Washer
Part Number - #7473

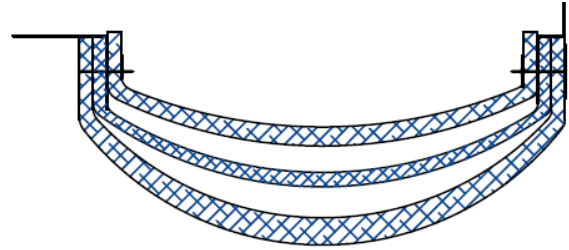


Hilti CP601S Sealant
Part Number - 2837



Flameguard II 4" thru 6" Corner Assembly
(For size and p/n refer to chart)

Model #	Part # 1 hr	Part # 2 hr
UFG-601C,602C	UFG601C	UFG602C
UFG-401C,402C	UFG401C	UFG402C



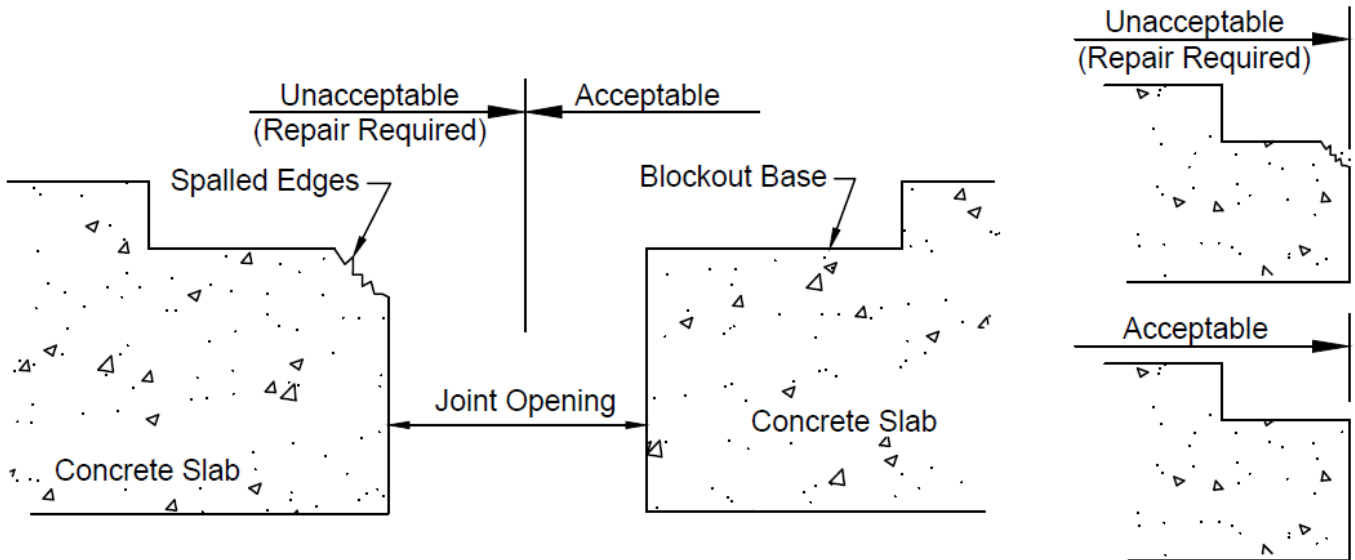
Flameguard II 8" thru 12" Corner Assembly
(For size and p/n refer to chart)

Model #	Part # 1 hr	Part # 2 hr
UFG-1201C,1202C	UFG1201C	UFG1202C
UFG-1001C,1002C	UFG1001C	UFG1002C
UFG-801C,802C	UFG801C	UFG802C

Installation

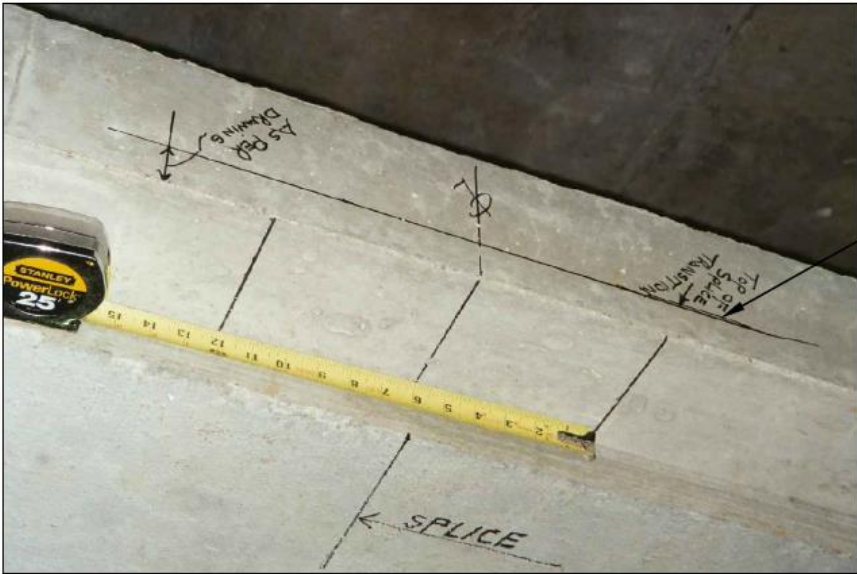
- 1 Prepare concrete block out for installation of fire barrier. Deficiencies in block out base and spalled edges must be corrected prior to beginning work.

Note: Contractor to repair any spalled edges with a Repair Material approved by the Buildings Structural Engineer.



2

Mark fire barrier splice locations and outline edges of splice transition as shown.



Refer to WBA shop drawings to determine depth of Splice transition.

3

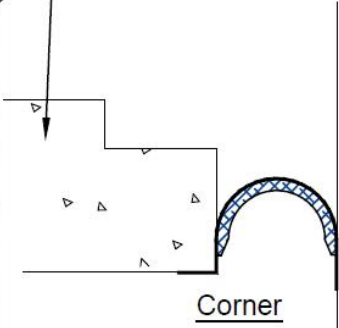
After splice locations have been determined, secure splice transition, utilizing duct tape to concrete slab as shown in photo.

Splice Transition



Duct Tape (By others)

Concrete Slab

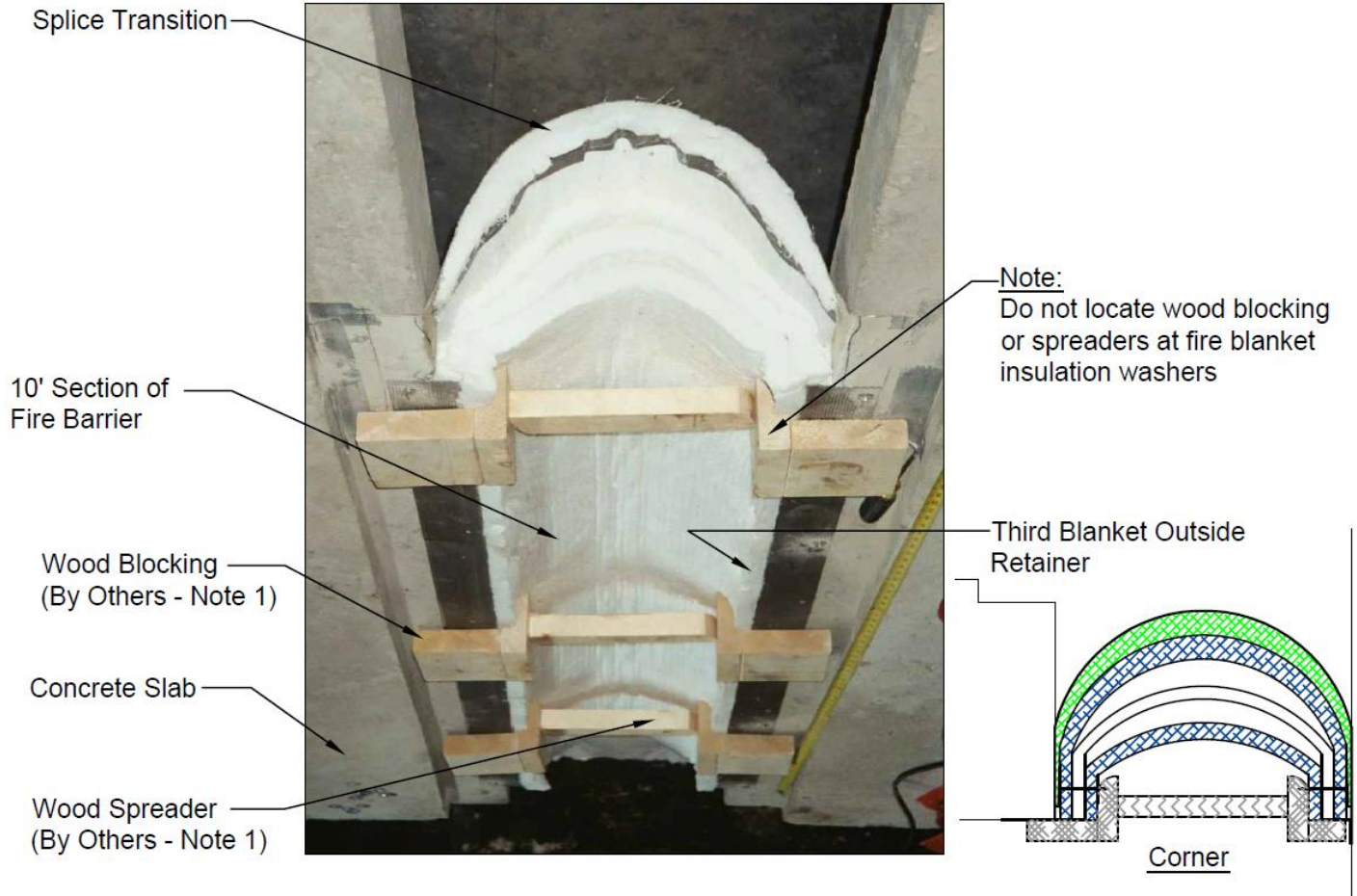


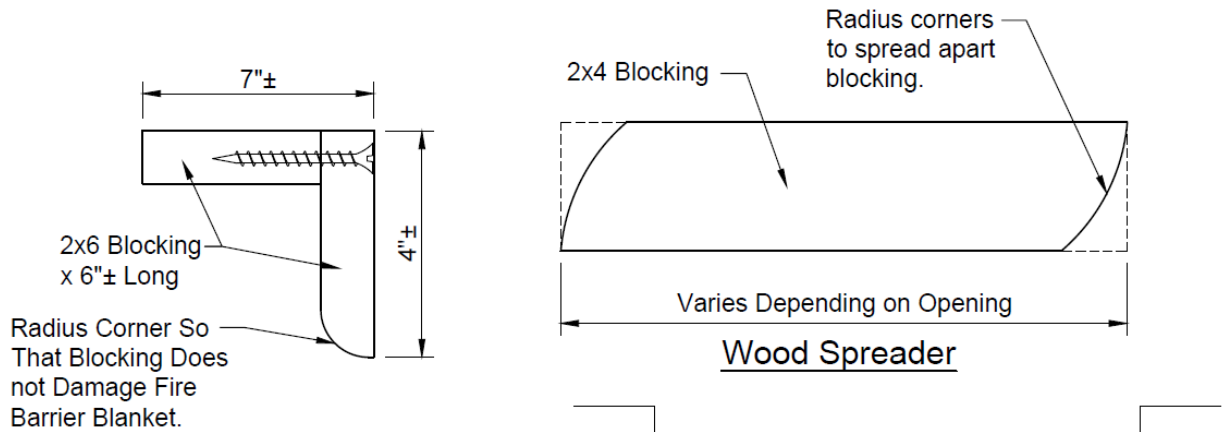
4

Insert 10' section of fire barrier into opening. Ensure that end of fire barrier is located on centerline of Splice Transition. Once fire barrier is inserted into opening, mount wood blocking, insert and wedge wood spreader to expend fire barrier to its correct position.

Notes:

1. Wood blocking and spreader is required to ensure that fire barrier is installed tight to adjacent concrete construction.





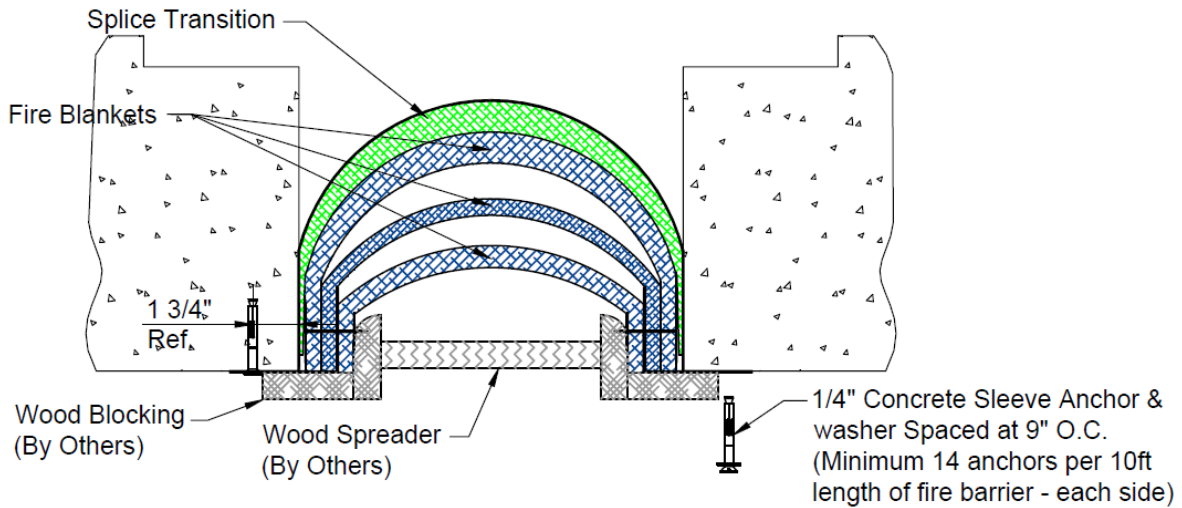
Wood Blocking

Required only when system incorporates third Fire Barrier Blanket outside of metal retainer as shown in photo above. Not required if third blanket is not used.

Model	"A"	"T"
UFG-1201,1201C,1202,1202C	10"	1"
UFG-1001,1001C,1002,1002C	8"	1"
UFG-801,801C,802,802C	6"	1"
UFG-601,601C,602,602C	4"	1"
UFG-401,401C,402,402C	2"	1"

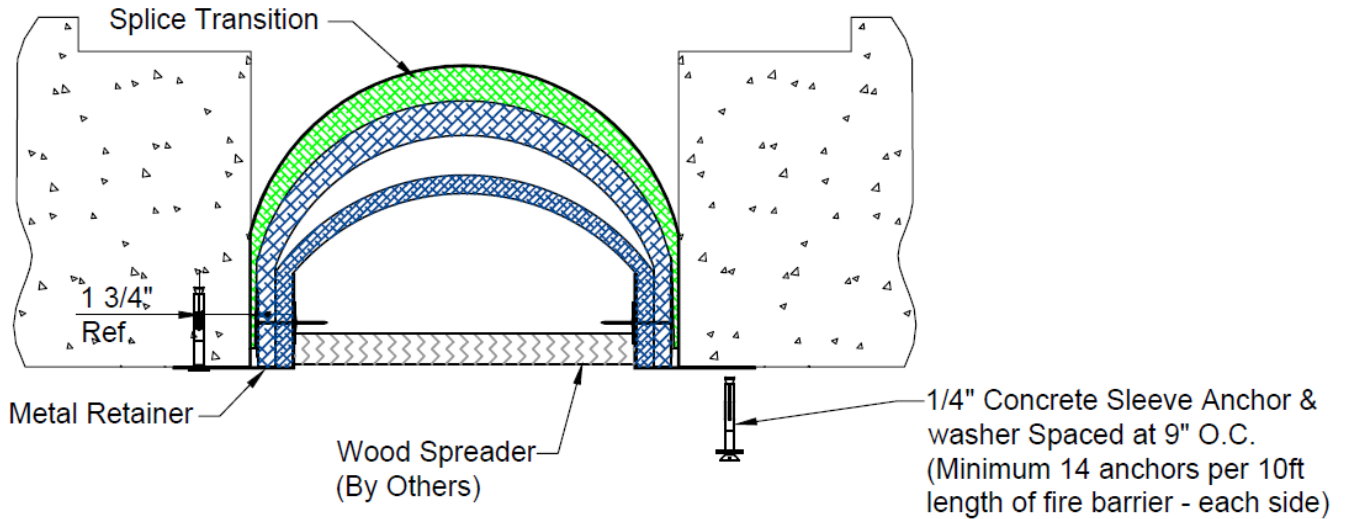
5A

Once fire barrier has been blocked open, mark and drill holes for 1/4" x 2 1/4" lg concrete sleeve anchors spaced at 9" O.C. Once the holes have been drilled, remove powder dust, exercising care not to get debris into fire blanket assembly. Install concrete sleeve anchor with washers.



5B

Once fire barrier has been blocked open, mark and drill holes for 1/4" x 2 1/4" lg concrete sleeve anchors spaced at 9" O.C. Once the holes have been drilled, remove powder dust, exercising care not to get debris into fire blanket assembly. Install concrete sleeve anchor with washers.



6

After the first section of fire barrier has been installed, apply CP601S sealant to all blanket layers of the fire blanket assembly (Except: splice transition).



7 Repeat Step 4 with next section of fire barrier. Install next section, ensuring there are no gaps at the splice location between blankets, as shown below.

Note: To remove small gaps between sections of fire barrier, gently tap opposite ends of metal retainers with a hammer and wood blocking to slowly move the fire barrier forward, compressing the CP601S sealant at the splice line. Exercise care not to damage fire barrier blanket where wood blocking is applied.



8

After the next fire barrier section is in place, repeat step 5A or 5B.

9

With installation complete, temporarily cover system to ensure debris does not enter fire barrier cavity. It shall be the installer's responsibility to protect completed fire barrier installations. Damaged fire barriers will be replaced at installer's expense.

Information provided herein, including but not limited to, any drawing, design, photograph, graphic, or statement(s) ("Materials") are proprietary and the property of Sika Emseal. ("Company"). Reproduction, translation, or reduction to any electronic medium or machine readable form, in whole or part, is strictly prohibited, except for the express purpose for which it has been furnished, without prior written consent of Company. All Materials contained herein are provided by Company for information purposes only. Company reserves the right to amend or withdraw any information contained in the Materials without notice. All technical or other advice by Company, whether verbal or written, concerning products, or the use of products in specific situations ("Advice") is given by Company and is used at the User's own risk.

Sika Emseal
25 Bridle Lane, Westborough, MA 01581 USA
Phone: 508-836-0280 / Fax 508-836-0281
www.emseal.com

Rev. 1.0 06-14-2024



BUILDING TRUST

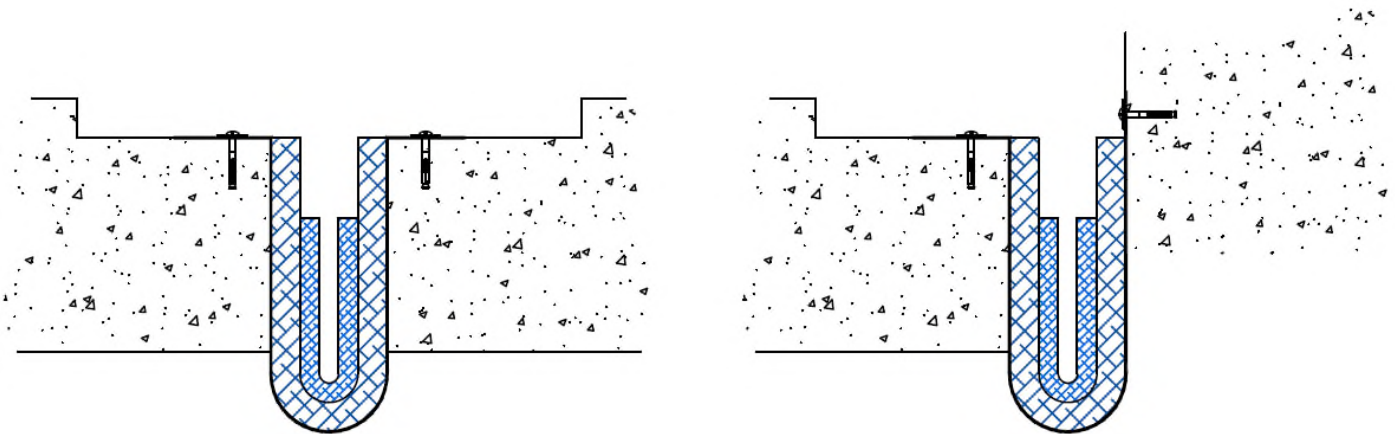




BUILDING TRUST



Installation Procedure



Wabo®FlameGuard II – HFG & HFG-C 2”

Fire Barrier Systems for Expansion Joints

The following installation procedure is very important and must be fully understood prior to beginning any work. To ensure proper installation and performance of expansion joint system the following actions must be completed by the installing contractor. **Failure to do so will affect product warranty.**

- 1) Carefully read and understand installation procedure. Contact Emseal's Technical Service Department at (508) 836-0280 for product assistance.
- 2) Inspect all shipments and materials for missing or damaged components and hardware. Contact Customer Service at (508) 836-0280 with Emseal's order number and invoice for prompt assistance.
- 3) Inspect substrate or adjacent construction for acceptance before beginning work. Report unacceptable construction to the project manager for scheduled repair work.
- 4) Review Emseal shop drawings for project specific detailed information if Engineering services were purchased at time of order.

Health & Safety

During the installation of any Sika Emseal product, appropriate personal protective items should be worn at all times, including but not limited to the following:

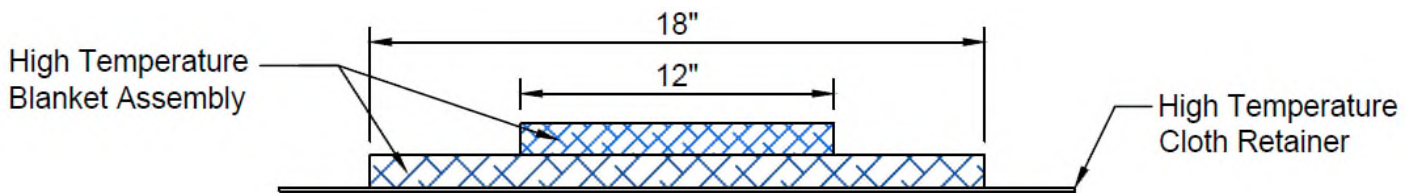
- Proper work clothing
- Safety glasses
- Safety boots
- Gloves
- Hard hat



Local rules and regulations regarding safe work environments and health should be followed.

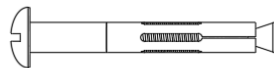
Product Components

The following are standard components for the floor condition:



Flameguard II 2" Floor Assembly
(For size and p/n refer to chart)

Model #	Part # 4 hr
HFG-204	HFG204



1/4" X 1 1/2" Concrete Sleeve Anchor
Part Number - #6911

1/4" Flat Washer
Part Number - #7473

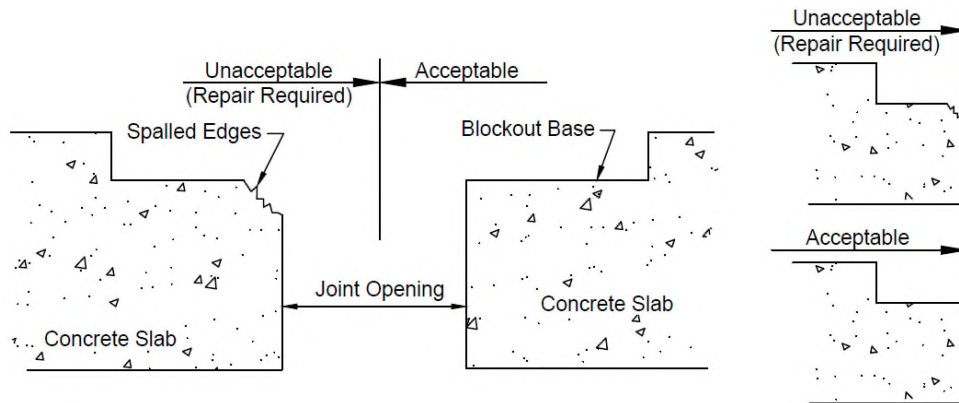


Hilti CFS-S SIL GG Sealant
Part Number - #2861

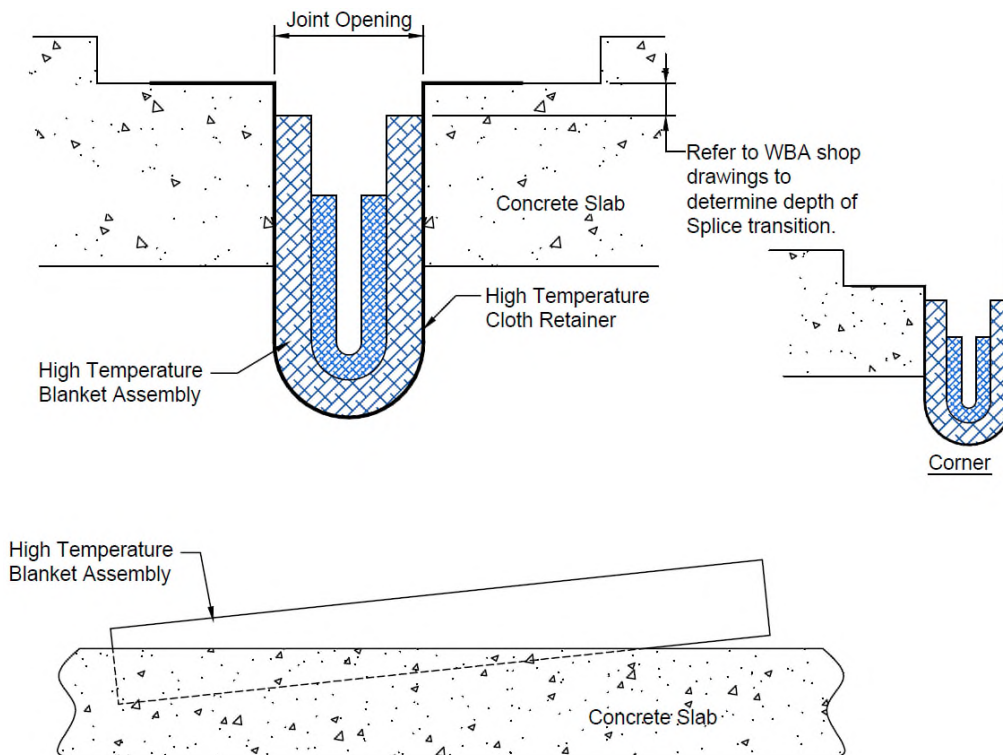


Installation

- 1 Prepare concrete breakout for installation of fire barrier. Deficiencies in breakout base and spalled edges must be corrected prior to beginning work.
Note: Contractor to repair any spalled edges with a Repair Material approved by the Buildings Structural Engineer.

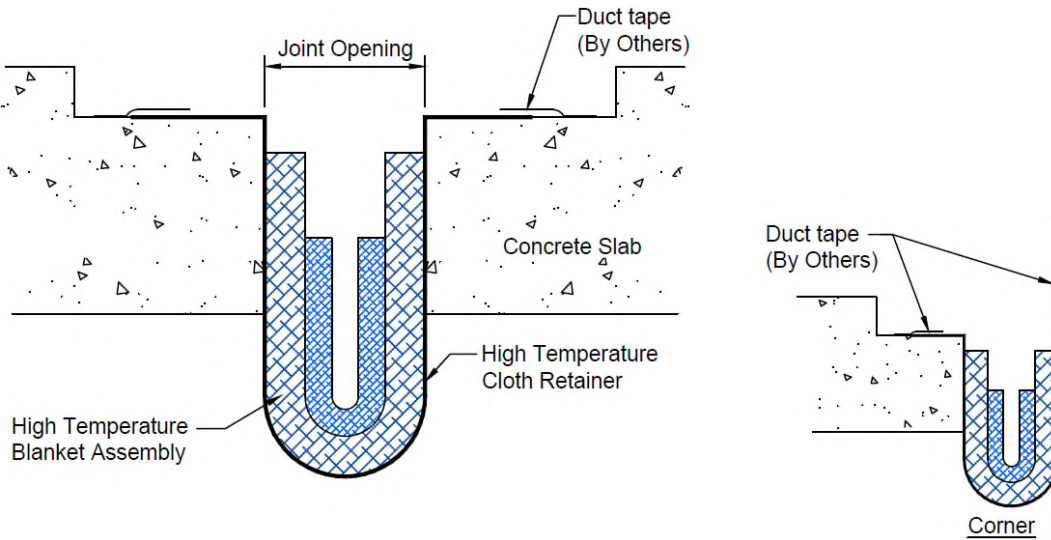


- 2 Squeeze fire barrier assembly together and slowly insert into joint opening. For easiest installation, it is best to start at one end of the fire barrier section and work your way down the section.



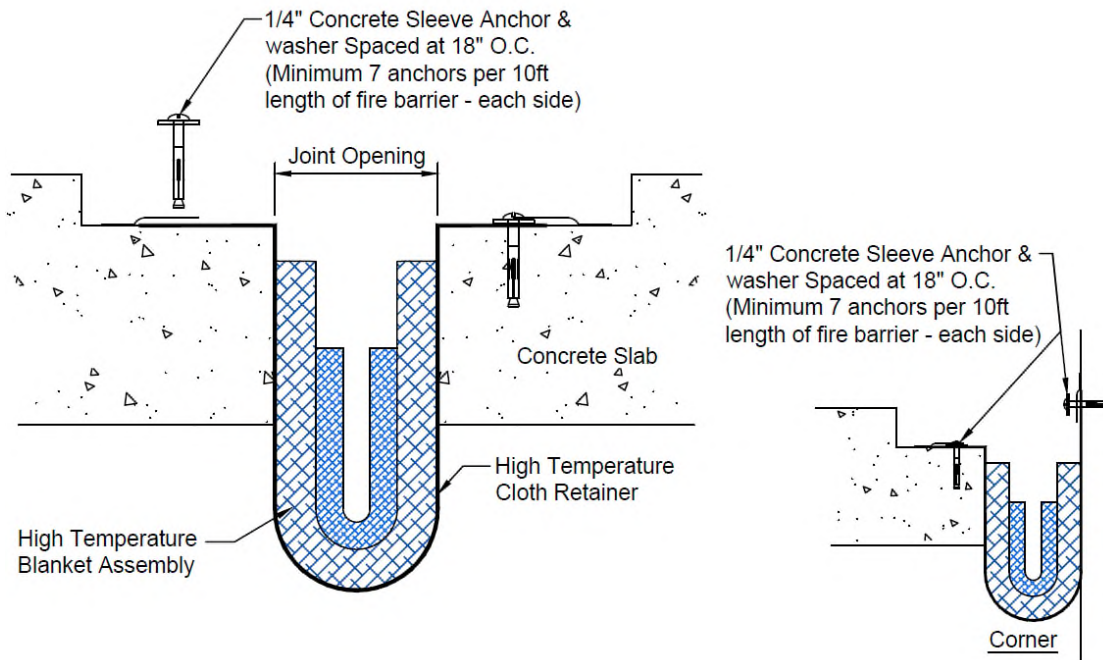
3

Utilizing duct tape as a temporary fastener, tape flaps of high temperature cloth retainer to concrete slab until the fasteners are installed.



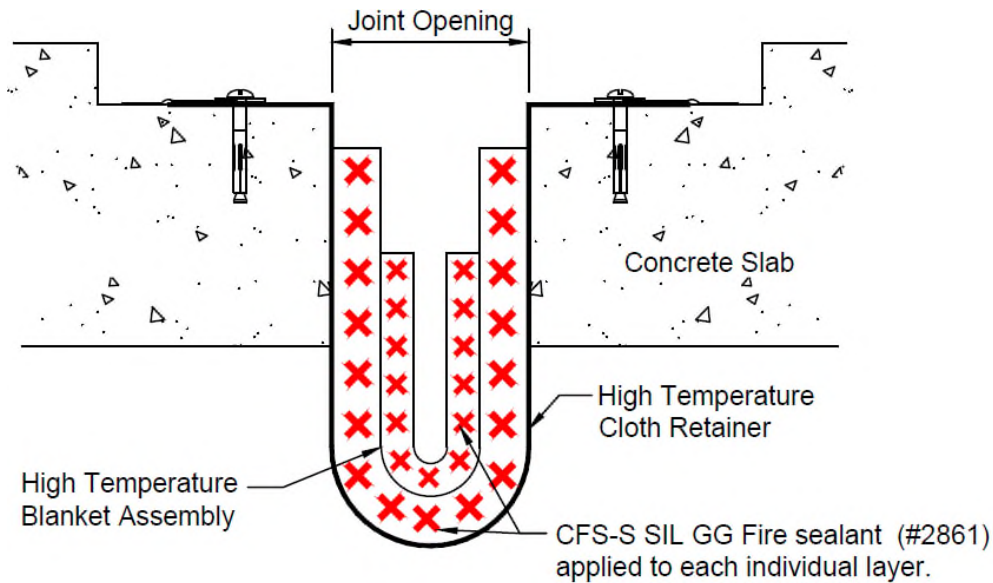
4

Once fire barrier section has been taped down, mark and drill holes for 1/4" x 1 1/2" lg concrete sleeve anchors spaced at 18" O.C. Once the holes have been drilled, remove powder dust, exercising care not to get debris into fire blanket assembly. Install concrete sleeve anchor with washers.



5

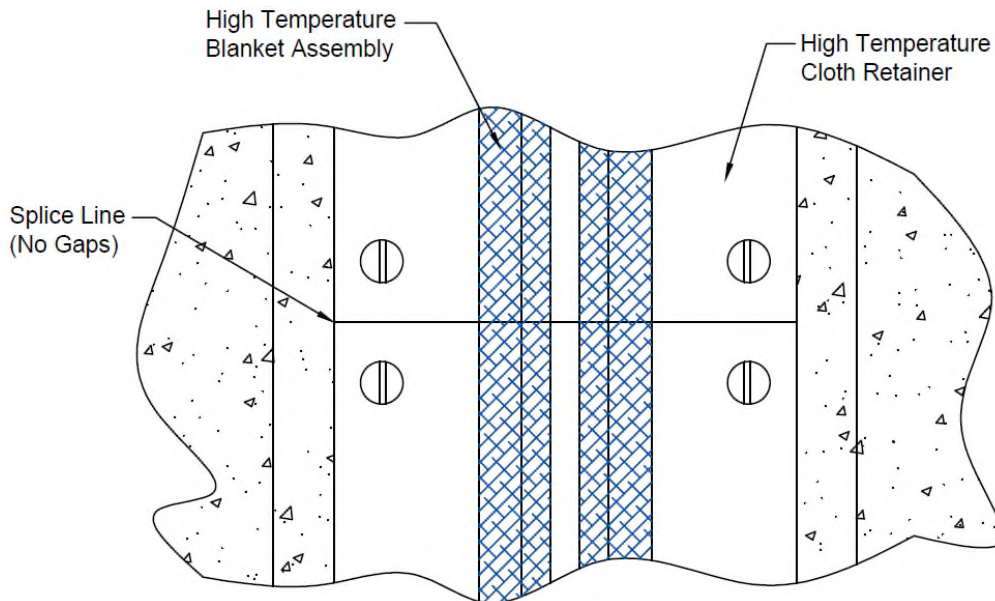
After the first section of fire barrier has been installed, apply CFS-S SIL GG sealant (#2861) to all blanket layers of the fire blanket assembly on one side only.



6

Repeat Step 2 with next section of fire barrier. Install next section, ensuring that there are no gaps at the splice location between blankets, as shown below.

Note: To remove small gaps between sections of fire barrier, gently pull cloth retainer towards splice line, compressing the CFS-S SIL GG sealant (#2861) at the splice line. Exercise care not to damage fire barrier blanket or cloth retainer while pulling it towards splice line.



7

After the next fire barrier section is in place, repeat steps 3 through 6.

8

With installation complete, temporarily cover system to ensure debris does not enter fire barrier cavity. It shall be the installer's responsibility to protect completed fire barrier installations. Damaged fire barriers will be replaced at installer's expense.

Information provided herein, including but not limited to, any drawing, design, photograph, graphic, or statement(s) ("Materials") are proprietary and the property of Sika Emseal. ("Company"). Reproduction, translation, or reduction to any electronic medium or machine readable form, in whole or part, is strictly prohibited, except for the express purpose for which it has been furnished, without prior written consent of Company. All Materials contained herein are provided by Company for information purposes only. Company reserves the right to amend or withdraw any information contained in the Materials without notice. All technical or other advice by Company, whether verbal or written, concerning products, or the use of products in specific situations ("Advice") is given by Company and is used at the User's own risk.

Sika Emseal
25 Bridle Lane, Westborough, MA 01581 USA
Phone: 508-836-0280 / Fax 508-836-0281
www.emseal.com

Rev. 1.0 06-13-2024



BUILDING TRUST

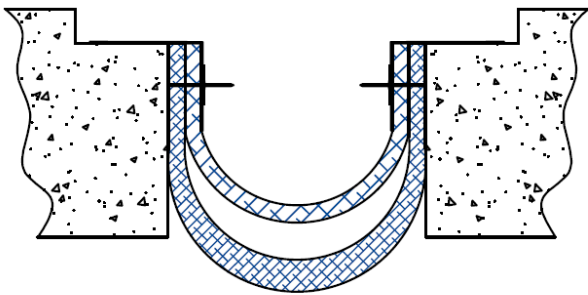




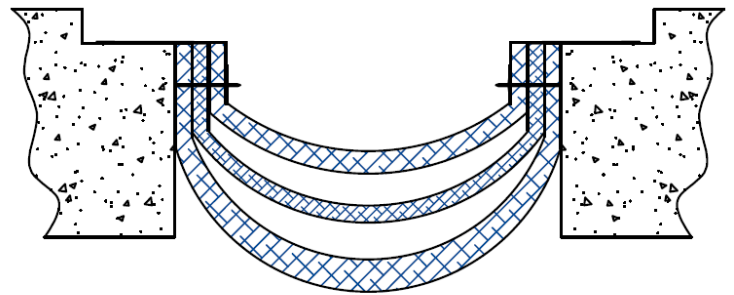
BUILDING TRUST



Installation Procedure



2 Layers
4" thru 6"



3 Layers
8" thru 26"

Wabo[®]FlameGuard II – HFG & HFG-C 4"-26"

Fire Barrier Systems for Expansion Joints

The following installation procedure is very important and must be fully understood prior to beginning any work. To ensure proper installation and performance of expansion joint system the following actions must be completed by the installing contractor. **Failure to do so will affect product warranty.**

- 1) Carefully read and understand installation procedure. Contact Emseal's Technical Service Department at (508) 836-0280 for product assistance.
- 2) Inspect all shipments and materials for missing or damaged components and hardware. Contact Customer Service at (508) 836-0280 with Emseal's order number and invoice for prompt assistance.
- 3) Inspect substrate or adjacent construction for acceptance before beginning work. Report unacceptable construction to the project manager for scheduled repair work.
- 4) Review Emseal shop drawings for project specific detailed information if Engineering services were purchased at time of order.

Health & Safety

During the installation of any Sika Emseal product, appropriate personal protective items should be worn at all times, including but not limited to the following:

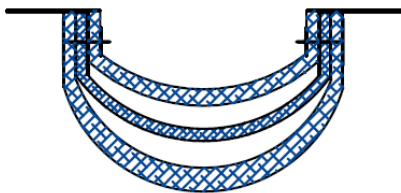
- Proper work clothing
- Safety glasses
- Safety boots
- Gloves
- Hard hat



Local rules and regulations regarding safe work environments and health should be followed.

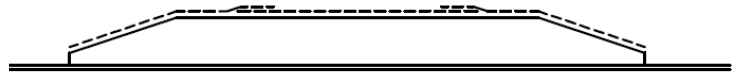
Product Components

The following are standard components for the floor condition:



Flameguard II 8" thru 26" Floor Assembly
(For size and p/n refer to chart)

Model #	Part # 1 hr	Part # 2 hr
HFG-2602		HFG2602
HFG-2402		HFG2402
HFG-2202		HFG2202
HFG-2002		HFG2002
HFG-1802		HFG1802
HFG-1602		HFG1602
HFG-1402		HFG1402
HFG-1201,1202	HFG1201	HFG1202
HFG-1001,1002	HFG1001	HFG1002
HFG-801,802	HFG801	HFG802

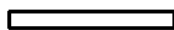


Splice Transition
(For size and p/n refer to chart)

Model #	Part #
HFG-2602	3218
HFG-2402	3217
HFG-2202	3216
HFG-2002	3215
HFG-1802	3214
HFG-1602	3213
HFG-1402	3212
HFG-1201,1202	3211
HFG-1001,1002	3211
HFG-801,802	3208
HFG-601,602	3206
HFG-401,402	3204



1/4" X 2-1/4" Concrete
Sleeve Anchor
Part Number - #6913

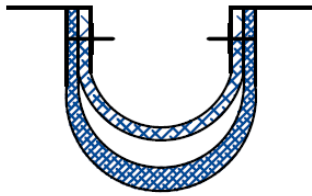


1/4" Flat Washer
Part Number - #7473



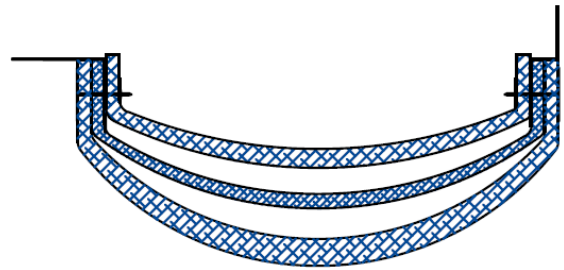
Hilti CFS-S SIL GG Sealant
Part Number - #2861





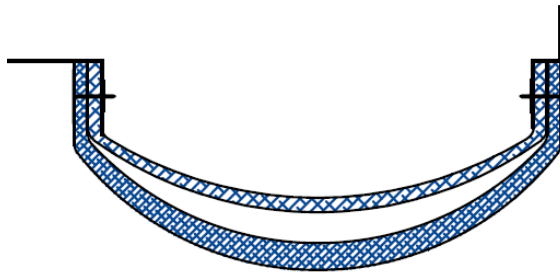
Flameguard II 4" thru 6" Floor Assembly
(For size and p/n refer to chart)

Model #	Part # 1 hr	Part # 2 hr
HFG-601,602	HFG601	HFG602
HFG-401,402	HFG401	HFG402



Flameguard II 8" thru 12" Corner Assembly
(For size and p/n refer to chart)

Model #	Part # 1 hr	Part # 2 hr
HFG-2602AB		HFG2602AB
HFG-2402AB		HFG2402AB
HFG-2202AB		HFG2202AB
HFG-2002AB		HFG2002AB
HFG-1802AB		HFG1802AB
HFG-1602AB		HFG1602AB
HFG-1402AB		HFG1402AB
HFG-1201AB,1202AB	HFG1201AB	HFG1202AB
HFG-1001AB,1002AB	HFG1001AB	HFG1002AB
HFG-801AB,802AB	HFG801AB	HFG802AB

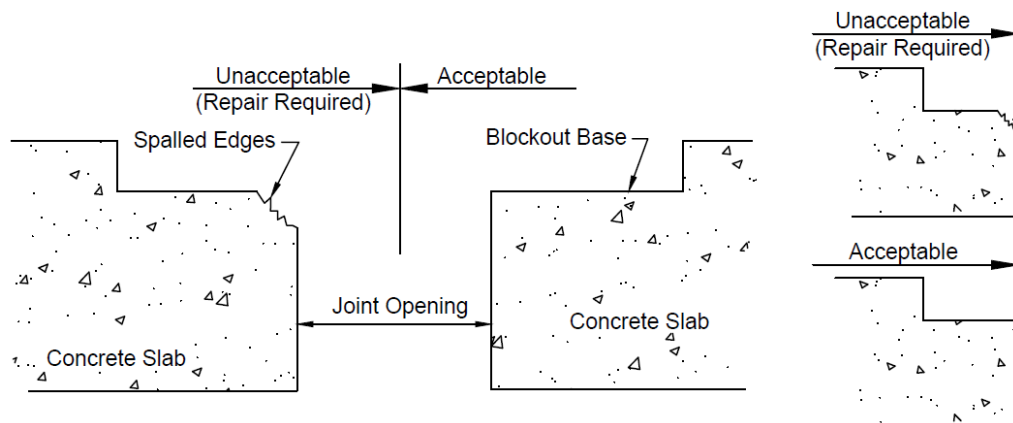


Flameguard II 4" thru 6" Corner Assembly
(For size and p/n refer to chart)

Model #	Part # 1 hr	Part # 2 hr
HFG-601AB,602AB	HFG601AB	HFG602AB
HFG-401AB,402AB	HFG401AB	HFG402AB

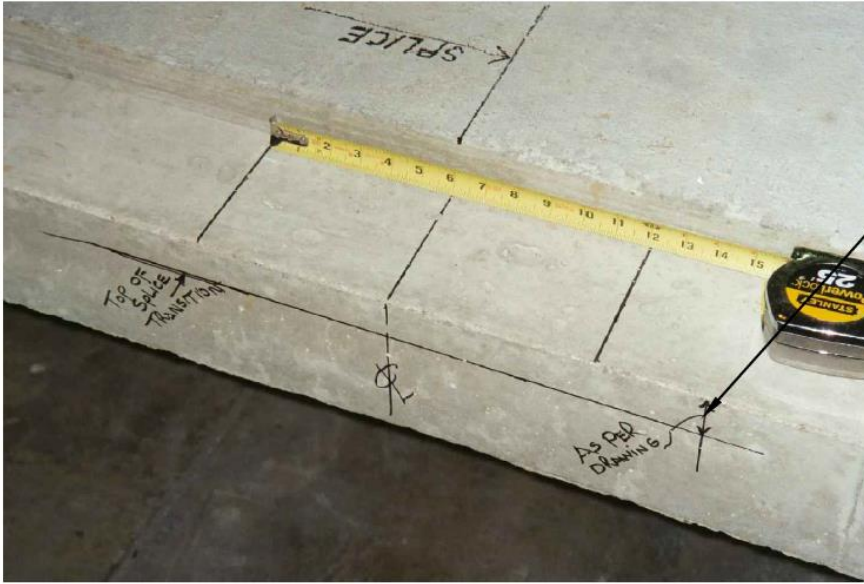
Installation

- Prepare concrete blockout for installation of fire barrier. Deficiencies in blockout base and spalled edges must be corrected prior to beginning work.
Note: Contractor to repair any spalled edges with a Repair Material approved by the Buildings Structural Engineer.



2

Mark fire barrier splice locations and outline edges of splice transition as shown.

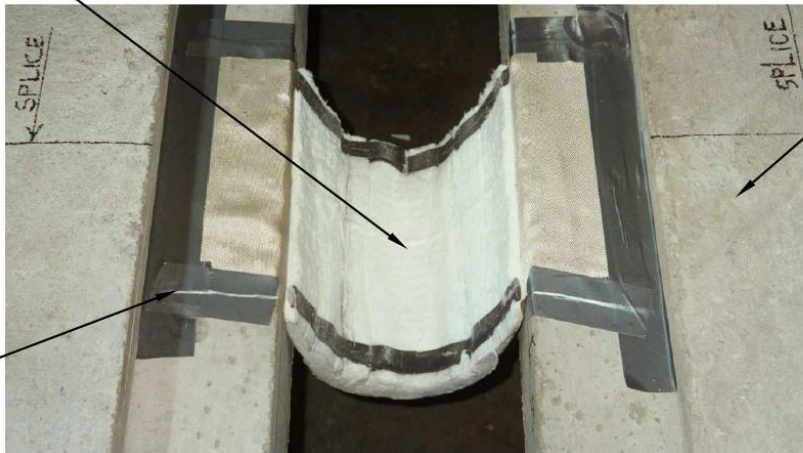


Refer to WBA shop drawings to determine depth of Splice transition.

3

After splice locations have been determined, secure splice transition utilizing duct tape to concrete slab as shown in photo.

Splice Transition



Duct Tape
(By others)

Concrete Slab

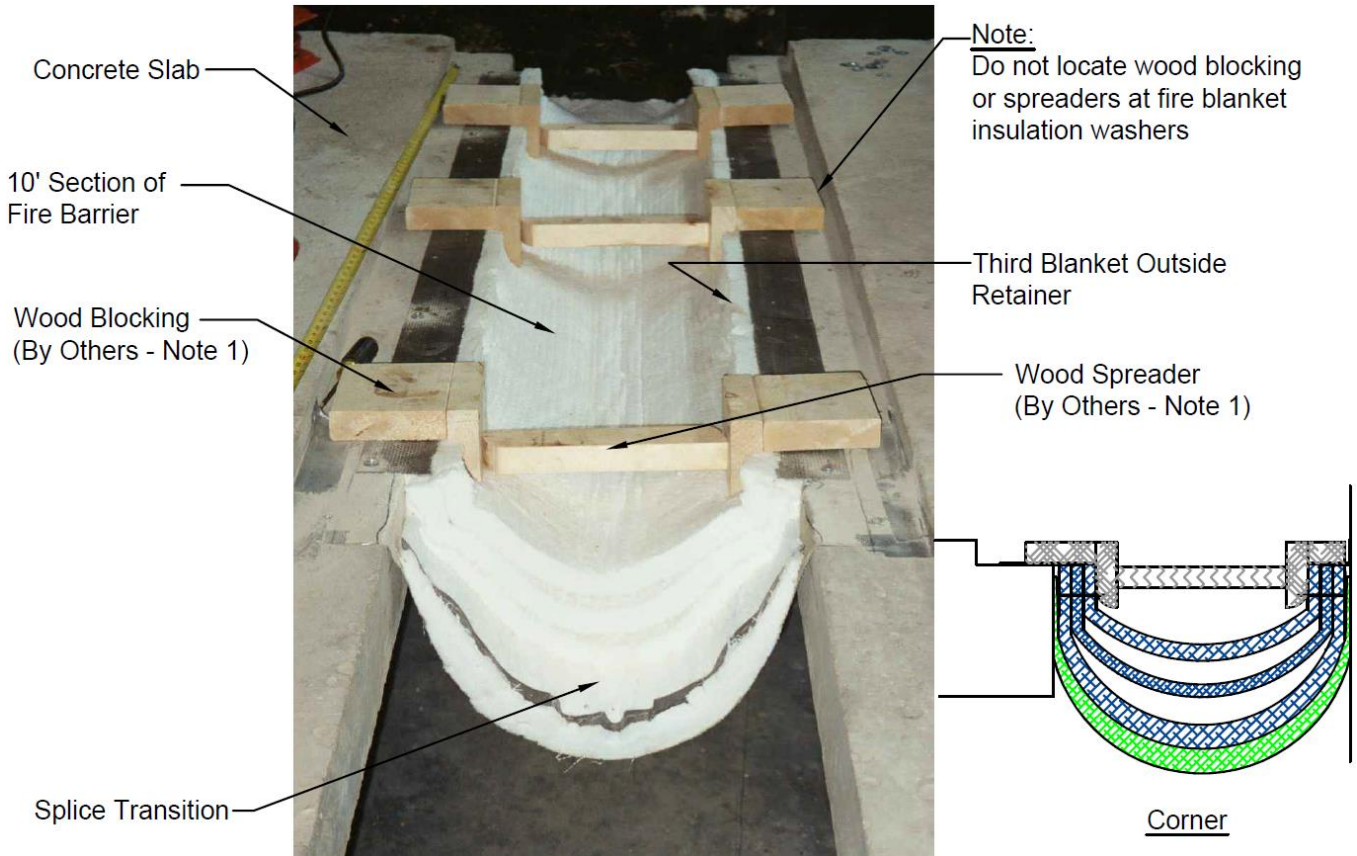
Corner

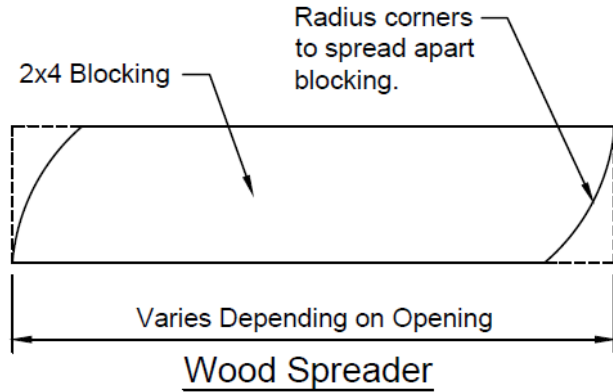
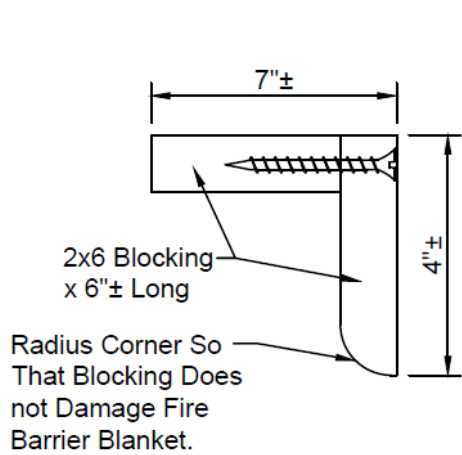


4 Insert 10' section of fire barrier into opening. Ensure that end of fire barrier is located on centerline of Splice Transition. Once fire barrier is inserted into opening, mount wood blocking insert and wedge wood spreader to expend fire barrier to its correct position.

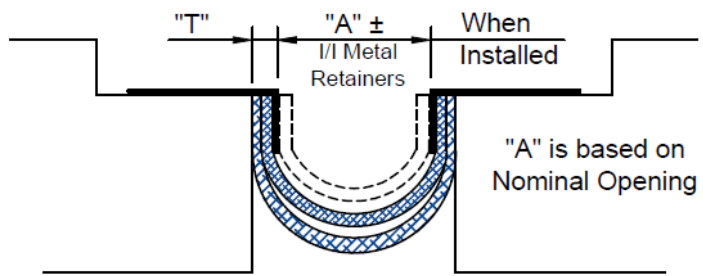
Notes:

1. Wood blocking and spreader is required to ensure that fire barrier is installed tight to adjacent concrete construction.





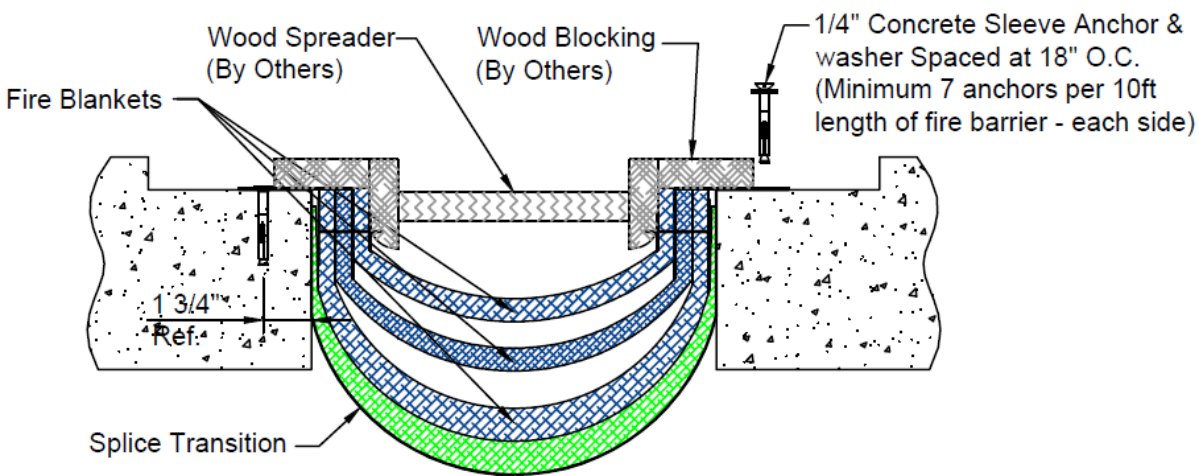
Wood Blocking
 Required only when system incorporates third Fire Barrier Blanket outside of metal retainer as shown in photo above. Not required if third blanket is not used.



Model	"A"	"T"
HFG-1201,1201AB,1202,1202AB	10"	1"
HFG-1001,1001AB,1002,1002AB	8"	1"
HFG-801,801AB,802,802AB	6"	1"
HFG-601,601AB,602,602AB	4"	1"
HFG-401,401AB,402,402AB	2"	1"

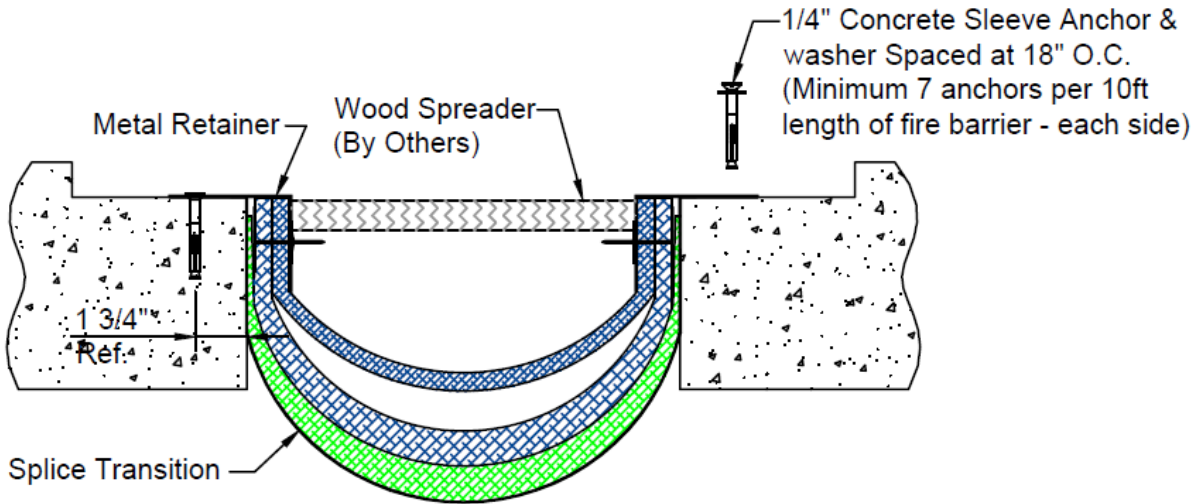
5A

Once fire barrier has been blocked open, mark and drill holes for 1/4" x 2 1/4" lg concrete sleeve anchors spaced at 18" O.C. Once the holes have been drilled, remove powder dust, exercising care not to get debris into fire blanket assembly. Install concrete sleeve anchor with washers.



5B

Once fire barrier has been blocked open, mark and drill holes for 1/4" x 2 1/4" lg concrete sleeve anchors spaced at 18" O.C. Once the holes have been drilled, remove powder dust, exercising care not to get debris into fire blanket assembly. Install concrete sleeve anchor with washers.



6

After the first section of fire barrier has been installed, apply CFS-S SIL GG sealant (#2861) to all blanket layers of the fire blanket assembly (Except: splice transition).



7 Repeat Step 4 with next section of fire barrier. Install next section, ensuring that there are no gaps at the splice location between blankets, as shown above.

Note:

To remove small gaps between sections of fire barrier, gently tap opposite ends of metal retainers with a hammer and wood blocking to slowly move the fire barrier forward, compressing the CFS-S SIL GG sealant (#2861) at the splice line. Exercise care not to damage fire barrier blanket where wood blocking is applied.



8 After the next fire barrier section is in place, repeat step 5A or 5B.

9 With installation complete, temporarily cover system to ensure debris does not enter fire barrier cavity. It shall be the installer's responsibility to protect completed fire barrier installations. Damaged fire barriers will be replaced at installer's expense.

Information provided herein, including but not limited to, any drawing, design, photograph, graphic, or statement(s) ("Materials") are proprietary and the property of Sika Emseal. ("Company"). Reproduction, translation, or reduction to any electronic medium or machine readable form, in whole or part, is strictly prohibited, except for the express purpose for which it has been furnished, without prior written consent of Company. All Materials contained herein are provided by Company for information purposes only. Company reserves the right to amend or withdraw any information contained in the Materials without notice. All technical or other advice by Company, whether verbal or written, concerning products, or the use of products in specific situations ("Advice") is given by Company and is used at the User's own risk.

Sika Emseal
25 Bridle Lane, Westborough, MA 01581 USA
Phone: 508-836-0280 / Fax 508-836-0281
www.emseal.com

Rev. 1.0 06-14-2024

